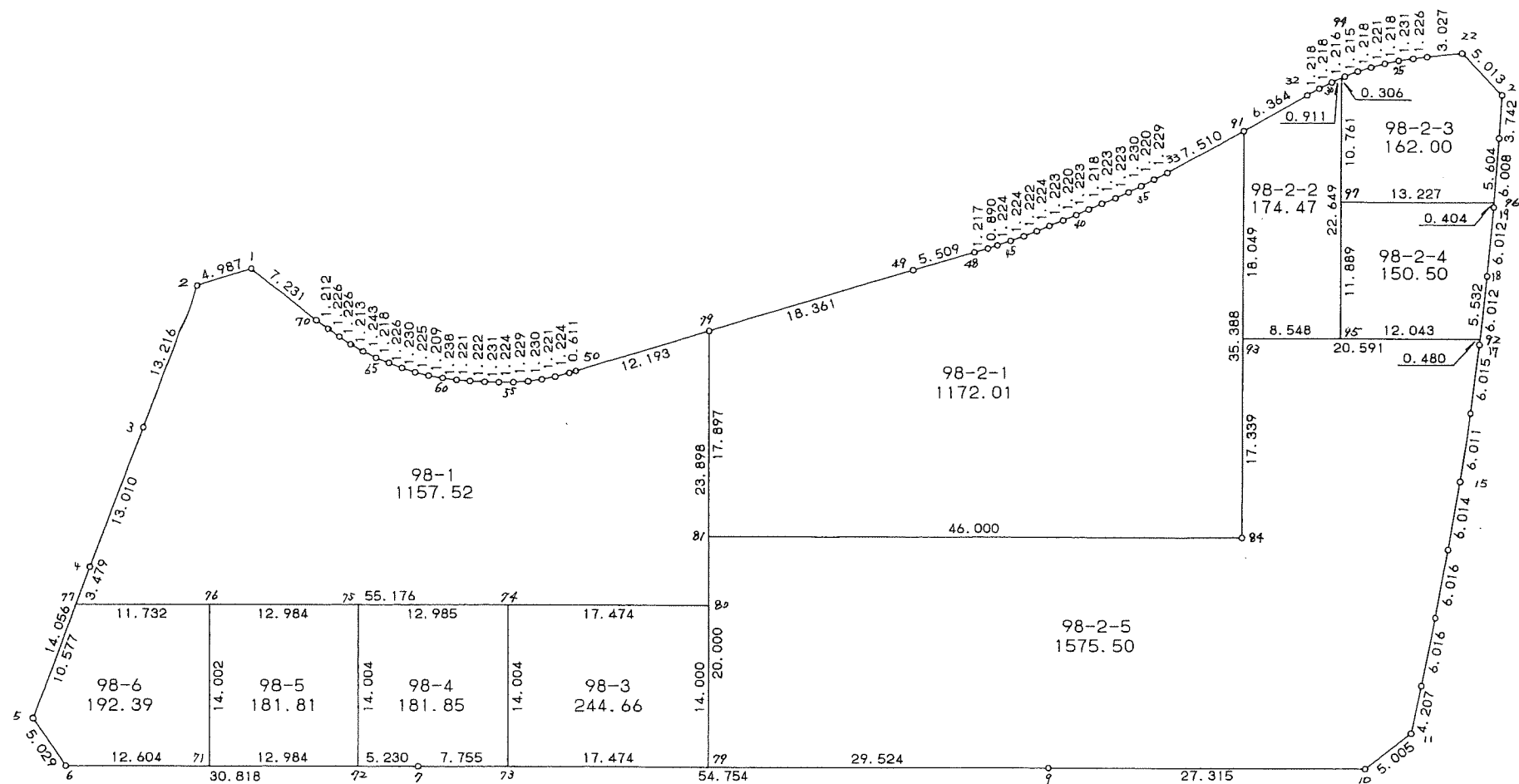
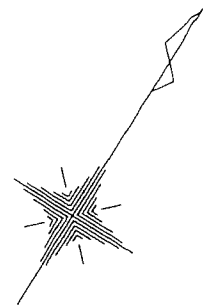


98街区



<< 四街道南土地区画整理事業 >>

\* \* 面積計算 (倍横距法) \* \*

| 地<br>器械点 | 番 : 98 BL<br>視準点 | 内角        | 方向角       | 距離     | 緯距      | 経距     | X座標        | Y座標       | 倍横距     | 倍面積         |
|----------|------------------|-----------|-----------|--------|---------|--------|------------|-----------|---------|-------------|
| 98-1     | 98-2             | 124-13-33 | 220-40-25 | 4.987  | -3.782  | -3.250 | -38181.486 | 31180.248 | -3.250  | 12.291500   |
| 98-2     | 98-3             | 128-11-18 | 168-51-43 | 13.216 | -12.967 | 2.553  | -38194.453 | 31182.801 | -3.947  | 51.180749   |
| 98-3     | 98-4             | 180-00-34 | 168-52-17 | 13.010 | -12.765 | 2.511  | -38207.218 | 31185.312 | 1.117   | -14.258505  |
| 98-4     | 98-5             | 179-59-43 | 168-52-00 | 14.056 | -13.791 | 2.714  | -38221.009 | 31188.026 | 6.342   | -87.462522  |
| 98-5     | 98-6             | 124-05-39 | 112-57-39 | 5.029  | -1.962  | 4.631  | -38222.971 | 31192.657 | 13.687  | -26.853894  |
| 98-6     | 98-7             | 125-04-27 | 58-02-06  | 30.818 | 16.315  | 26.145 | -38206.656 | 31218.802 | 44.463  | 725.413845  |
| 98-7     | 98-9             | 179-59-00 | 58-01-06  | 54.754 | 29.000  | 46.443 | -38177.656 | 31265.245 | 117.051 | 3394.479000 |
| 98-9     | 98-10            | 180-05-31 | 58-06-37  | 27.315 | 14.430  | 23.192 | -38163.226 | 31288.437 | 186.686 | 2693.878980 |
| 98-10    | 98-11            | 141-23-33 | 19-30-10  | 5.005  | 4.718   | 1.671  | -38158.508 | 31290.108 | 211.549 | 998.088182  |
| 98-11    | 98-12            | 140-37-41 | 340-07-51 | 4.207  | 3.957   | -1.430 | -38154.551 | 31288.678 | 211.790 | 838.053030  |
| 98-12    | 98-13            | 179-31-50 | 339-39-41 | 6.016  | 5.641   | -2.091 | -38148.910 | 31286.587 | 208.269 | 1174.845429 |
| 98-13    | 98-14            | 178-47-05 | 338-26-46 | 6.016  | 5.595   | -2.210 | -38143.315 | 31284.377 | 203.968 | 1141.200960 |
| 98-14    | 98-15            | 179-07-15 | 337-34-01 | 6.014  | 5.559   | -2.295 | -38137.756 | 31282.082 | 199.463 | 1108.814817 |
| 98-15    | 98-16            | 178-34-48 | 336-08-49 | 6.011  | 5.498   | -2.431 | -38132.258 | 31279.651 | 194.737 | 1070.664026 |
| 98-16    | 98-17            | 179-08-14 | 335-17-03 | 6.015  | 5.464   | -2.515 | -38126.794 | 31277.136 | 189.791 | 1037.018024 |
| 98-17    | 98-18            | 178-53-32 | 334-10-35 | 6.012  | 5.412   | -2.619 | -38121.382 | 31274.517 | 184.657 | 999.363684  |
| 98-18    | 98-19            | 179-13-28 | 333-24-03 | 6.012  | 5.376   | -2.692 | -38116.006 | 31271.825 | 179.346 | 964.164096  |
| 98-19    | 98-20            | 178-46-02 | 332-10-05 | 6.008  | 5.313   | -2.805 | -38110.693 | 31269.020 | 173.849 | 923.659737  |
| 98-20    | 98-21            | 179-14-23 | 331-24-28 | 3.742  | 3.286   | -1.791 | -38107.407 | 31267.229 | 169.253 | 556.165358  |
| 98-21    | 98-22            | 132-51-21 | 284-15-49 | 5.013  | 1.235   | -4.858 | -38106.172 | 31262.371 | 162.604 | 200.815940  |
| 98-22    | 98-23            | 127-37-56 | 231-53-45 | 3.027  | -1.868  | -2.382 | -38108.040 | 31259.989 | 155.364 | -290.219952 |
| 98-23    | 98-24            | 179-15-43 | 231-09-28 | 1.226  | -0.769  | -0.955 | -38108.809 | 31259.034 | 152.027 | -116.908763 |
| 98-24    | 98-25            | 177-49-37 | 228-59-05 | 1.231  | -0.808  | -0.929 | -38109.617 | 31258.105 | 150.143 | -121.315544 |
| 98-25    | 98-26            | 176-38-49 | 225-37-54 | 1.218  | -0.852  | -0.871 | -38110.469 | 31257.234 | 148.343 | -126.388236 |
| 98-26    | 98-27            | 176-20-55 | 221-58-49 | 1.221  | -0.908  | -0.817 | -38111.377 | 31256.417 | 146.655 | -133.162740 |

<< 四街道南土地区画整理事業 >>

| 器械点   | 視準点   | 内角        | 方向角       | 距離     | 緯距      | 経距      | X座標        | Y座標       | 倍横距     | 倍面積          |
|-------|-------|-----------|-----------|--------|---------|---------|------------|-----------|---------|--------------|
| 98-27 | 98-28 | 178-41-33 | 220-40-22 | 1.218  | -0.924  | -0.794  | -38112.301 | 31255.623 | 145.044 | -134.020656  |
| 98-28 | 98-29 | 176-29-56 | 217-10-18 | 1.215  | -0.968  | -0.734  | -38113.269 | 31254.889 | 143.516 | -138.923488  |
| 98-29 | 98-30 | 176-42-05 | 213-52-23 | 1.216  | -1.010  | -0.678  | -38114.279 | 31254.211 | 142.104 | -143.525040  |
| 98-30 | 98-31 | 177-13-11 | 211-05-34 | 1.218  | -1.043  | -0.629  | -38115.322 | 31253.582 | 140.797 | -146.851271  |
| 98-31 | 98-32 | 178-31-26 | 209-37-00 | 1.218  | -1.059  | -0.602  | -38116.381 | 31252.980 | 139.566 | -147.800394  |
| 98-32 | 98-91 | 179-18-10 | 208-55-10 | 6.364  | -5.570  | -3.077  | -38121.951 | 31249.903 | 135.887 | -756.890590  |
| 98-91 | 98-33 | 180-06-38 | 209-01-48 | 7.510  | -6.566  | -3.645  | -38128.517 | 31246.258 | 129.165 | -848.097390  |
| 98-33 | 98-34 | 180-52-18 | 209-54-06 | 1.229  | -1.066  | -0.612  | -38129.583 | 31245.646 | 124.908 | -133.151928  |
| 98-34 | 98-35 | 180-20-14 | 210-14-20 | 1.220  | -1.053  | -0.614  | -38130.636 | 31245.032 | 123.682 | -130.237146  |
| 98-35 | 98-36 | 181-45-35 | 211-59-55 | 1.230  | -1.044  | -0.652  | -38131.680 | 31244.380 | 122.416 | -127.802304  |
| 98-36 | 98-37 | 181-00-20 | 213-00-15 | 1.223  | -1.026  | -0.667  | -38132.706 | 31243.713 | 121.097 | -124.245522  |
| 98-37 | 98-38 | 181-52-54 | 214-53-09 | 1.223  | -1.003  | -0.699  | -38133.709 | 31243.014 | 119.731 | -120.090193  |
| 98-38 | 98-39 | 179-01-57 | 213-55-06 | 1.218  | -1.010  | -0.680  | -38134.719 | 31242.334 | 118.352 | -119.535520  |
| 98-39 | 98-40 | 180-33-07 | 214-28-13 | 1.223  | -1.009  | -0.692  | -38135.728 | 31241.642 | 116.980 | -118.032820  |
| 98-40 | 98-41 | 180-22-52 | 214-51-05 | 1.220  | -1.001  | -0.697  | -38136.729 | 31240.945 | 115.591 | -115.706591  |
| 98-41 | 98-42 | 180-33-53 | 215-24-58 | 1.223  | -0.996  | -0.709  | -38137.725 | 31240.236 | 114.185 | -113.728260  |
| 98-42 | 98-43 | 179-45-14 | 215-10-12 | 1.224  | -1.001  | -0.705  | -38138.726 | 31239.531 | 112.771 | -112.883771  |
| 98-43 | 98-44 | 181-15-14 | 216-25-26 | 1.222  | -0.984  | -0.726  | -38139.710 | 31238.805 | 111.340 | -109.558560  |
| 98-44 | 98-45 | 181-53-15 | 218-18-41 | 1.224  | -0.960  | -0.758  | -38140.670 | 31238.047 | 109.856 | -105.461760  |
| 98-45 | 98-46 | 180-52-09 | 219-10-50 | 1.224  | -0.949  | -0.774  | -38141.619 | 31237.273 | 108.324 | -102.799476  |
| 98-46 | 98-47 | 180-53-24 | 220-04-14 | 0.890  | -0.681  | -0.573  | -38142.300 | 31236.700 | 106.977 | -72.851337   |
| 98-47 | 98-48 | 182-02-49 | 222-07-03 | 1.217  | -0.903  | -0.816  | -38143.203 | 31235.884 | 105.588 | -95.345964   |
| 98-48 | 98-49 | 179-35-34 | 221-42-37 | 5.509  | -4.113  | -3.666  | -38147.316 | 31232.218 | 101.106 | -415.848978  |
| 98-49 | 98-79 | 179-25-51 | 221-08-28 | 18.361 | -13.827 | -12.080 | -38161.143 | 31220.138 | 85.360  | -1180.272720 |
| 98-79 | 98-50 | 180-04-47 | 221-13-15 | 12.193 | -9.171  | -8.034  | -38170.314 | 31212.104 | 65.246  | -598.371066  |
| 98-50 | 98-51 | 179-47-51 | 221-01-06 | 0.611  | -0.461  | -0.401  | -38170.775 | 31211.703 | 56.811  | -26.189871   |

<< 四街道南土地区画整理事業 >>

| 器械点   | 視準点   | 内角        | 方向角       | 距離    | 緯距     | 経距     | X座標        | Y座標       | 倍横距    | 倍面積          |
|-------|-------|-----------|-----------|-------|--------|--------|------------|-----------|--------|--------------|
| 98-51 | 98-52 | 181-21-56 | 222-23-02 | 1.224 | -0.904 | -0.825 | -38171.679 | 31210.878 | 55.585 | -50.248840   |
| 98-52 | 98-53 | 184-04-35 | 226-27-37 | 1.221 | -0.841 | -0.885 | -38172.520 | 31209.993 | 53.875 | -45.308875   |
| 98-53 | 98-54 | 183-19-21 | 229-46-58 | 1.230 | -0.794 | -0.939 | -38173.314 | 31209.054 | 52.051 | -41.328494   |
| 98-54 | 98-55 | 184-31-21 | 234-18-19 | 1.229 | -0.717 | -0.998 | -38174.031 | 31208.056 | 50.114 | -35.931738   |
| 98-55 | 98-56 | 183-30-39 | 237-48-58 | 1.224 | -0.652 | -1.036 | -38174.683 | 31207.020 | 48.080 | -31.348160   |
| 98-56 | 98-57 | 181-59-40 | 239-48-38 | 1.231 | -0.619 | -1.064 | -38175.302 | 31205.956 | 45.980 | -28.461620   |
| 98-57 | 98-58 | 181-45-31 | 241-34-09 | 1.222 | -0.582 | -1.075 | -38175.884 | 31204.881 | 43.841 | -25.515462   |
| 98-58 | 98-59 | 181-11-40 | 242-45-49 | 1.221 | -0.559 | -1.086 | -38176.443 | 31203.795 | 41.680 | -23.299120   |
| 98-59 | 98-60 | 182-39-30 | 245-25-19 | 1.238 | -0.515 | -1.126 | -38176.958 | 31202.669 | 39.468 | -20.326020   |
| 98-60 | 98-61 | 182-37-06 | 248-02-25 | 1.209 | -0.452 | -1.121 | -38177.410 | 31201.548 | 37.221 | -16.823892   |
| 98-61 | 98-62 | 183-59-00 | 252-01-25 | 1.225 | -0.378 | -1.165 | -38177.788 | 31200.383 | 34.935 | -13.205430   |
| 98-62 | 98-63 | 184-05-54 | 256-07-19 | 1.230 | -0.295 | -1.194 | -38178.083 | 31199.189 | 32.576 | -9.609920    |
| 98-63 | 98-64 | 182-37-56 | 258-45-15 | 1.226 | -0.239 | -1.202 | -38178.322 | 31197.987 | 30.180 | -7.213020    |
| 98-64 | 98-65 | 181-07-34 | 259-52-49 | 1.218 | -0.214 | -1.199 | -38178.536 | 31196.788 | 27.779 | -5.944706    |
| 98-65 | 98-66 | 184-12-26 | 264-05-15 | 1.243 | -0.128 | -1.236 | -38178.664 | 31195.552 | 25.344 | -3.244032    |
| 98-66 | 98-67 | 184-07-00 | 268-12-15 | 1.213 | -0.038 | -1.212 | -38178.702 | 31194.340 | 22.896 | -0.870048    |
| 98-67 | 98-68 | 182-07-23 | 270-19-38 | 1.226 | 0.007  | -1.226 | -38178.695 | 31193.114 | 20.458 | 0.143206     |
| 98-68 | 98-69 | 182-51-09 | 273-10-47 | 1.226 | 0.068  | -1.224 | -38178.627 | 31191.890 | 18.008 | 1.224544     |
| 98-69 | 98-70 | 182-04-29 | 275-15-16 | 1.212 | 0.111  | -1.207 | -38178.516 | 31190.683 | 15.577 | 1.729047     |
| 98-70 | 98-1  | 181-11-36 | 276-26-52 | 7.231 | 0.812  | -7.185 | -38177.704 | 31183.498 | 7.185  | 5.834220     |
|       |       |           |           |       |        |        |            |           | 倍面積    | 10385.556225 |
|       |       |           |           |       |        |        |            |           | 面積     | 5192.77      |

<< 四街道南土地区画整理事業 >>

| 地番     | 種別  | 面積           | 坪数      |
|--------|-----|--------------|---------|
| 98-1   | 境界点 | 1157.5200000 | 350.14  |
| 98-2-1 | 境界点 | 1172.0100000 | 354.53  |
| 98-2-2 | 境界点 | 174.4700000  | 52.77   |
| 98-2-3 | 境界点 | 162.0000000  | 49.00   |
| 98-2-4 | 境界点 | 150.5000000  | 45.52   |
| 98-2-5 | 境界点 | 1575.5000000 | 476.58  |
| 98-3   | 境界点 | 244.6600000  | 74.00   |
| 98-4   | 境界点 | 181.8500000  | 55.00   |
| 98-5   | 境界点 | 181.8100000  | 54.99   |
| 98-6   | 境界点 | 192.3900000  | 58.19   |
|        | 合計  | 5192.7100000 | 1570.79 |

<< 四街道南土地区画整理事業 >>

\* \* 面積計算 (倍横距法) \* \*

| 地<br>器械点 | 番<br>視準点 | 98-1<br>内角 | 方向角       | 距離     | 緯距      | 経距     | X座標        | Y座標       | 倍横距     | 倍面積         |
|----------|----------|------------|-----------|--------|---------|--------|------------|-----------|---------|-------------|
| 98-79    | 98-50    | 73-11-15   | 221-13-15 | 12.193 | -9.171  | -8.034 | -38170.314 | 31212.104 | -8.034  | 73.679814   |
| 98-50    | 98-51    | 179-47-51  | 221-01-06 | 0.611  | -0.461  | -0.401 | -38170.775 | 31211.703 | -16.469 | 7.592209    |
| 98-51    | 98-52    | 181-21-56  | 222-23-02 | 1.224  | -0.904  | -0.825 | -38171.679 | 31210.878 | -17.695 | 15.996280   |
| 98-52    | 98-53    | 184-04-35  | 226-27-37 | 1.221  | -0.841  | -0.885 | -38172.520 | 31209.993 | -19.405 | 16.319605   |
| 98-53    | 98-54    | 183-19-21  | 229-46-58 | 1.230  | -0.794  | -0.939 | -38173.314 | 31209.054 | -21.229 | 16.855826   |
| 98-54    | 98-55    | 184-31-21  | 234-18-19 | 1.229  | -0.717  | -0.998 | -38174.031 | 31208.056 | -23.166 | 16.610022   |
| 98-55    | 98-56    | 183-30-39  | 237-48-58 | 1.224  | -0.652  | -1.036 | -38174.683 | 31207.020 | -25.200 | 16.430400   |
| 98-56    | 98-57    | 181-59-40  | 239-48-38 | 1.231  | -0.619  | -1.064 | -38175.302 | 31205.956 | -27.300 | 16.898700   |
| 98-57    | 98-58    | 181-45-31  | 241-34-09 | 1.222  | -0.582  | -1.075 | -38175.884 | 31204.881 | -29.439 | 17.133498   |
| 98-58    | 98-59    | 181-11-40  | 242-45-49 | 1.221  | -0.559  | -1.086 | -38176.443 | 31203.795 | -31.600 | 17.664400   |
| 98-59    | 98-60    | 182-39-30  | 245-25-19 | 1.238  | -0.515  | -1.126 | -38176.958 | 31202.669 | -33.812 | 17.413180   |
| 98-60    | 98-61    | 182-37-06  | 248-02-25 | 1.209  | -0.452  | -1.121 | -38177.410 | 31201.548 | -36.059 | 16.298668   |
| 98-61    | 98-62    | 183-59-00  | 252-01-25 | 1.225  | -0.378  | -1.165 | -38177.788 | 31200.383 | -38.345 | 14.494410   |
| 98-62    | 98-63    | 184-05-54  | 256-07-19 | 1.230  | -0.295  | -1.194 | -38178.083 | 31199.189 | -40.704 | 12.007680   |
| 98-63    | 98-64    | 182-37-56  | 258-45-15 | 1.226  | -0.239  | -1.202 | -38178.322 | 31197.987 | -43.100 | 10.300900   |
| 98-64    | 98-65    | 181-07-34  | 259-52-49 | 1.218  | -0.214  | -1.199 | -38178.536 | 31196.788 | -45.501 | 9.737214    |
| 98-65    | 98-66    | 184-12-26  | 264-05-15 | 1.243  | -0.128  | -1.236 | -38178.664 | 31195.552 | -47.936 | 6.135808    |
| 98-66    | 98-67    | 184-07-00  | 268-12-15 | 1.213  | -0.038  | -1.212 | -38178.702 | 31194.340 | -50.384 | 1.914592    |
| 98-67    | 98-68    | 182-07-23  | 270-19-38 | 1.226  | 0.007   | -1.226 | -38178.695 | 31193.114 | -52.822 | -0.369754   |
| 98-68    | 98-69    | 182-51-09  | 273-10-47 | 1.226  | 0.068   | -1.224 | -38178.627 | 31191.890 | -55.272 | -3.758496   |
| 98-69    | 98-70    | 182-04-29  | 275-15-16 | 1.212  | 0.111   | -1.207 | -38178.516 | 31190.683 | -57.703 | -6.405033   |
| 98-70    | 98-1     | 181-11-36  | 276-26-52 | 7.231  | 0.812   | -7.185 | -38177.704 | 31183.498 | -66.095 | -53.669140  |
| 98-1     | 98-2     | 124-13-33  | 220-40-25 | 4.987  | -3.782  | -3.250 | -38181.486 | 31180.248 | -76.530 | 289.436460  |
| 98-2     | 98-3     | 128-11-18  | 168-51-43 | 13.216 | -12.967 | 2.553  | -38194.453 | 31182.801 | -77.227 | 1001.402509 |
| 98-3     | 98-4     | 180-00-34  | 168-52-17 | 13.010 | -12.765 | 2.511  | -38207.218 | 31185.312 | -72.163 | 921.160695  |

<< 四街道南土地区画整理事業 >>

| 器械点   | 視準点   | 内角        | 方向角       | 距離     | 緯距     | 経距      | X座標        | Y座標       | 倍横距     | 倍面積         |
|-------|-------|-----------|-----------|--------|--------|---------|------------|-----------|---------|-------------|
| 98-4  | 98-77 | 179-59-43 | 168-52-00 | 3.479  | -3.413 | 0.672   | -38210.631 | 31185.984 | -68.980 | 235.428740  |
| 98-77 | 98-80 | 69-09-46  | 58-01-46  | 55.176 | 29.214 | 46.806  | -38181.417 | 31232.790 | -21.502 | -628.159428 |
| 98-80 | 98-79 | 90-00-14  | 328-02-00 | 23.898 | 20.274 | -12.652 | -38161.143 | 31220.138 | 12.652  | 256.506648  |
|       |       |           |           |        |        |         |            |           | 倍面積     | 2315.056407 |
|       |       |           |           |        |        |         |            |           | 面積      | 1157.52     |

<< 四街道南土地区画整理事業 >>

\* \* 面積計算 ( 倍横距法 ) \* \*

| 地<br>器械点 | 番 :<br>視準点 | 98-2-1<br>内角 | 方向角       | 距離     | 緯距      | 経距      | X座標        | Y座標       | 倍横距    | 倍面積         |
|----------|------------|--------------|-----------|--------|---------|---------|------------|-----------|--------|-------------|
| 98-79    | 98-81      | 106-53-32    | 148-02-00 | 17.897 | -15.183 | 9.476   | -38176.326 | 31229.614 | 9.476  | -143.874108 |
| 98-81    | 98-84      | 90-00-00     | 58-02-00  | 46.000 | 24.353  | 39.024  | -38151.973 | 31268.638 | 57.976 | 1411.889528 |
| 98-84    | 98-91      | 90-00-00     | 328-02-00 | 35.388 | 30.022  | -18.735 | -38121.951 | 31249.903 | 78.265 | 2349.671830 |
| 98-91    | 98-33      | 60-59-48     | 209-01-48 | 7.510  | -6.566  | -3.645  | -38128.517 | 31246.258 | 55.885 | -366.940910 |
| 98-33    | 98-34      | 180-52-18    | 209-54-06 | 1.229  | -1.066  | -0.612  | -38129.583 | 31245.646 | 51.628 | -55.035448  |
| 98-34    | 98-35      | 180-20-14    | 210-14-20 | 1.220  | -1.053  | -0.614  | -38130.636 | 31245.032 | 50.402 | -53.073306  |
| 98-35    | 98-36      | 181-45-35    | 211-59-55 | 1.230  | -1.044  | -0.652  | -38131.680 | 31244.380 | 49.136 | -51.297984  |
| 98-36    | 98-37      | 181-00-20    | 213-00-15 | 1.223  | -1.026  | -0.667  | -38132.706 | 31243.713 | 47.817 | -49.060242  |
| 98-37    | 98-38      | 181-52-54    | 214-53-09 | 1.223  | -1.003  | -0.699  | -38133.709 | 31243.014 | 46.451 | -46.590353  |
| 98-38    | 98-39      | 179-01-57    | 213-55-06 | 1.218  | -1.010  | -0.680  | -38134.719 | 31242.334 | 45.072 | -45.522720  |
| 98-39    | 98-40      | 180-33-07    | 214-28-13 | 1.223  | -1.009  | -0.692  | -38135.728 | 31241.642 | 43.700 | -44.093300  |
| 98-40    | 98-41      | 180-22-52    | 214-51-05 | 1.220  | -1.001  | -0.697  | -38136.729 | 31240.945 | 42.311 | -42.353311  |
| 98-41    | 98-42      | 180-33-53    | 215-24-58 | 1.223  | -0.996  | -0.709  | -38137.725 | 31240.236 | 40.905 | -40.741380  |
| 98-42    | 98-43      | 179-45-14    | 215-10-12 | 1.224  | -1.001  | -0.705  | -38138.726 | 31239.531 | 39.491 | -39.530491  |
| 98-43    | 98-44      | 181-15-14    | 216-25-26 | 1.222  | -0.984  | -0.726  | -38139.710 | 31238.805 | 38.060 | -37.451040  |
| 98-44    | 98-45      | 181-53-15    | 218-18-41 | 1.224  | -0.960  | -0.758  | -38140.670 | 31238.047 | 36.576 | -35.112960  |
| 98-45    | 98-46      | 180-52-09    | 219-10-50 | 1.224  | -0.949  | -0.774  | -38141.619 | 31237.273 | 35.044 | -33.256756  |
| 98-46    | 98-47      | 180-53-24    | 220-04-14 | 0.890  | -0.681  | -0.573  | -38142.300 | 31236.700 | 33.697 | -22.947657  |
| 98-47    | 98-48      | 182-02-49    | 222-07-03 | 1.217  | -0.903  | -0.816  | -38143.203 | 31235.884 | 32.308 | -29.174124  |
| 98-48    | 98-49      | 179-35-34    | 221-42-37 | 5.509  | -4.113  | -3.666  | -38147.316 | 31232.218 | 27.826 | -114.448338 |
| 98-49    | 98-79      | 179-25-51    | 221-08-28 | 18.361 | -13.827 | -12.080 | -38161.143 | 31220.138 | 12.080 | -167.030160 |
|          |            |              |           |        |         |         |            |           | 倍面積    | 2344.026770 |
|          |            |              |           |        |         |         |            |           | 面積     | 1172.01     |



<< 四街道南土地区画整理事業 >>

\* \* 面積計算 (倍横距法) \* \*

| 地<br>器械点 | 番<br>視準点 | 98-2-2<br>内角 | 方向角       | 距離     | 緯距      | 経距      | X座標        | Y座標       | 倍横距    | 倍面積        |
|----------|----------|--------------|-----------|--------|---------|---------|------------|-----------|--------|------------|
| 98-94    | 98-30    | 65-50-23     | 213-52-23 | 0.911  | -0.756  | -0.508  | -38114.279 | 31254.211 | -0.508 | 0.384048   |
| 98-30    | 98-31    | 177-13-11    | 211-05-34 | 1.218  | -1.043  | -0.629  | -38115.322 | 31253.582 | -1.645 | 1.715735   |
| 98-31    | 98-32    | 178-31-26    | 209-37-00 | 1.218  | -1.059  | -0.602  | -38116.381 | 31252.980 | -2.876 | 3.045684   |
| 98-32    | 98-91    | 179-18-10    | 208-55-10 | 6.364  | -5.570  | -3.077  | -38121.951 | 31249.903 | -6.555 | 36.511350  |
| 98-91    | 98-93    | 119-06-50    | 148-02-00 | 18.049 | -15.312 | 9.555   | -38137.263 | 31259.458 | -0.077 | 1.179024   |
| 98-93    | 98-95    | 90-00-00     | 58-02-00  | 8.548  | 4.525   | 7.252   | -38132.738 | 31266.710 | 16.730 | 75.703250  |
| 98-95    | 98-94    | 90-00-00     | 328-02-00 | 22.649 | 19.215  | -11.991 | -38113.523 | 31254.719 | 11.991 | 230.407065 |
|          |          |              |           |        |         |         |            |           | 倍面積    | 348.946156 |
|          |          |              |           |        |         |         |            |           | 面積     | 174.47     |

<< 四街道南土地区画整理事業 >>

\* \* 面積計算 (倍横距法) \* \*

| 地<br>器械点 | 番<br>視準点 | 98-2-3<br>内角 | 方向角       | 距離     | 緯距     | 経距     | X座標        | Y座標       | 倍横距     | 倍面積        |
|----------|----------|--------------|-----------|--------|--------|--------|------------|-----------|---------|------------|
| 98-96    | 98-20    | 94-08-05     | 332-10-05 | 5.604  | 4.956  | -2.617 | -38110.693 | 31269.020 | -2.617  | -12.969852 |
| 98-20    | 98-21    | 179-14-23    | 331-24-28 | 3.742  | 3.286  | -1.791 | -38107.407 | 31267.229 | -7.025  | -23.084150 |
| 98-21    | 98-22    | 132-51-21    | 284-15-49 | 5.013  | 1.235  | -4.858 | -38106.172 | 31262.371 | -13.674 | -16.887390 |
| 98-22    | 98-23    | 127-37-56    | 231-53-45 | 3.027  | -1.868 | -2.382 | -38108.040 | 31259.989 | -20.914 | 39.067352  |
| 98-23    | 98-24    | 179-15-43    | 231-09-28 | 1.226  | -0.769 | -0.955 | -38108.809 | 31259.034 | -24.251 | 18.649019  |
| 98-24    | 98-25    | 177-49-37    | 228-59-05 | 1.231  | -0.808 | -0.929 | -38109.617 | 31258.105 | -26.135 | 21.117080  |
| 98-25    | 98-26    | 176-38-49    | 225-37-54 | 1.218  | -0.852 | -0.871 | -38110.469 | 31257.234 | -27.935 | 23.800620  |
| 98-26    | 98-27    | 176-20-55    | 221-58-49 | 1.221  | -0.908 | -0.817 | -38111.377 | 31256.417 | -29.623 | 26.897684  |
| 98-27    | 98-28    | 178-41-33    | 220-40-22 | 1.218  | -0.924 | -0.794 | -38112.301 | 31255.623 | -31.234 | 28.860216  |
| 98-28    | 98-29    | 176-29-56    | 217-10-18 | 1.215  | -0.968 | -0.734 | -38113.269 | 31254.889 | -32.762 | 31.713616  |
| 98-29    | 98-94    | 176-42-05    | 213-52-23 | 0.306  | -0.254 | -0.170 | -38113.523 | 31254.719 | -33.666 | 8.551164   |
| 98-94    | 98-97    | 114-09-37    | 148-02-00 | 10.761 | -9.129 | 5.697  | -38122.652 | 31260.416 | -28.139 | 256.880931 |
| 98-97    | 98-96    | 90-00-00     | 58-02-00  | 13.227 | 7.003  | 11.221 | -38115.649 | 31271.637 | -11.221 | -78.580663 |
|          |          |              |           |        |        |        |            |           | 倍面積     | 324.015627 |
|          |          |              |           |        |        |        |            |           | 面積      | 162.00     |

<< 四街道南土地区画整理事業 >>

\* \* 面積計算 (倍横距法) \* \*

| 地<br>器械点 | 番 : 98-2-4<br>視準点 | 内角        | 方向角       | 距離     | 緯距      | 経距      | X座標        | Y座標       | 倍横距    | 倍面積        |
|----------|-------------------|-----------|-----------|--------|---------|---------|------------|-----------|--------|------------|
| 98-97    | 98-95             | 90-00-00  | 148-02-00 | 11.889 | -10.086 | 6.294   | -38132.738 | 31266.710 | 6.294  | -63.481284 |
| 98-95    | 98-92             | 90-00-00  | 58-02-00  | 12.043 | 6.376   | 10.217  | -38126.362 | 31276.927 | 22.805 | 145.404680 |
| 98-92    | 98-18             | 96-08-35  | 334-10-35 | 5.532  | 4.980   | -2.410  | -38121.382 | 31274.517 | 30.612 | 152.447760 |
| 98-18    | 98-19             | 179-13-28 | 333-24-03 | 6.012  | 5.376   | -2.692  | -38116.006 | 31271.825 | 25.510 | 137.141760 |
| 98-19    | 98-96             | 178-46-02 | 332-10-05 | 0.404  | 0.357   | -0.188  | -38115.649 | 31271.637 | 22.630 | 8.078910   |
| 98-96    | 98-97             | 85-51-55  | 238-02-00 | 13.227 | -7.003  | -11.221 | -38122.652 | 31260.416 | 11.221 | -78.580663 |
|          |                   |           |           |        |         |         |            |           | 倍面積    | 301.011163 |
|          |                   |           |           |        |         |         |            |           | 面積     | 150.50     |

<< 四街道南土地区画整理事業 >>

\* \* 面積計算 ( 倍横距法 ) \* \*

| 地<br>器械点 | 番<br>視準点 | 98-2-5<br>内角 | 方向角       | 距離     | 緯距      | 経距      | X座標        | Y座標       | 倍横距     | 倍面積         |
|----------|----------|--------------|-----------|--------|---------|---------|------------|-----------|---------|-------------|
| 98-93    | 98-84    | 90-00-00     | 148-02-00 | 17.339 | -14.710 | 9.180   | -38151.973 | 31268.638 | 9.180   | -135.037800 |
| 98-84    | 98-81    | 270-00-00    | 238-02-00 | 46.000 | -24.353 | -39.024 | -38176.326 | 31229.614 | -20.664 | 503.230392  |
| 98-81    | 98-78    | 90-00-00     | 148-02-00 | 20.000 | -16.967 | 10.588  | -38193.293 | 31240.202 | -49.100 | 833.079700  |
| 98-78    | 98-9     | 89-59-06     | 58-01-06  | 29.524 | 15.637  | 25.043  | -38177.656 | 31265.245 | -13.469 | -210.614753 |
| 98-9     | 98-10    | 180-05-31    | 58-06-37  | 27.315 | 14.430  | 23.192  | -38163.226 | 31288.437 | 34.766  | 501.673380  |
| 98-10    | 98-11    | 141-23-33    | 19-30-10  | 5.005  | 4.718   | 1.671   | -38158.508 | 31290.108 | 59.629  | 281.329622  |
| 98-11    | 98-12    | 140-37-41    | 340-07-51 | 4.207  | 3.957   | -1.430  | -38154.551 | 31288.678 | 59.870  | 236.905590  |
| 98-12    | 98-13    | 179-31-50    | 339-39-41 | 6.016  | 5.641   | -2.091  | -38148.910 | 31286.587 | 56.349  | 317.864709  |
| 98-13    | 98-14    | 178-47-05    | 338-26-46 | 6.016  | 5.595   | -2.210  | -38143.315 | 31284.377 | 52.048  | 291.208560  |
| 98-14    | 98-15    | 179-07-15    | 337-34-01 | 6.014  | 5.559   | -2.295  | -38137.756 | 31282.082 | 47.543  | 264.291537  |
| 98-15    | 98-16    | 178-34-48    | 336-08-49 | 6.011  | 5.498   | -2.431  | -38132.258 | 31279.651 | 42.817  | 235.407866  |
| 98-16    | 98-17    | 179-08-14    | 335-17-03 | 6.015  | 5.464   | -2.515  | -38126.794 | 31277.136 | 37.871  | 206.927144  |
| 98-17    | 98-92    | 178-53-32    | 334-10-35 | 0.480  | 0.432   | -0.209  | -38126.362 | 31276.927 | 35.147  | 15.183504   |
| 98-92    | 98-93    | 83-51-25     | 238-02-00 | 20.591 | -10.901 | -17.469 | -38137.263 | 31259.458 | 17.469  | -190.429569 |
|          |          |              |           |        |         |         |            |           | 倍面積     | 3151.019882 |
|          |          |              |           |        |         |         |            |           | 面積      | 1575.50     |

<< 四街道南土地区画整理事業 >>

\* \* 面積計算 (倍横距法) \* \*

| 地<br>器<br>械<br>点 | 番 : 98-3<br>視準点 | 内角       | 方向角       | 距離     | 緯距      | 経距      | X座標        | Y座標       | 倍横距    | 倍面積         |
|------------------|-----------------|----------|-----------|--------|---------|---------|------------|-----------|--------|-------------|
| 98-74            | 98-73           | 90-00-00 | 148-02-00 | 14.004 | -11.880 | 7.414   | -38202.548 | 31225.380 | 7.414  | -88.078320  |
| 98-73            | 98-78           | 89-59-06 | 58-01-06  | 17.474 | 9.255   | 14.822  | -38193.293 | 31240.202 | 29.650 | 274.410750  |
| 98-78            | 98-80           | 90-00-54 | 328-02-00 | 14.000 | 11.876  | -7.412  | -38181.417 | 31232.790 | 37.060 | 440.124560  |
| 98-80            | 98-74           | 90-00-00 | 238-02-00 | 17.474 | -9.251  | -14.824 | -38190.668 | 31217.966 | 14.824 | -137.136824 |
|                  |                 |          |           |        |         |         |            |           | 倍面積    | 489.320166  |
|                  |                 |          |           |        |         |         |            |           | 面積     | 244.66      |

\* \* 面積計算 (倍横距法) \* \*

| 地<br>器<br>械<br>点 | 番 : 98-4<br>視準点 | 内角        | 方向角       | 距離     | 緯距      | 経距      | X座標        | Y座標       | 倍横距    | 倍面積        |
|------------------|-----------------|-----------|-----------|--------|---------|---------|------------|-----------|--------|------------|
| 98-75            | 98-72           | 90-00-27  | 148-02-00 | 14.004 | -11.881 | 7.414   | -38209.425 | 31214.365 | 7.414  | -88.085734 |
| 98-72            | 98-7            | 90-00-06  | 58-02-06  | 5.230  | 2.769   | 4.437   | -38206.656 | 31218.802 | 19.265 | 53.344785  |
| 98-7             | 98-73           | 179-59-00 | 58-01-06  | 7.755  | 4.108   | 6.578   | -38202.548 | 31225.380 | 30.280 | 124.390240 |
| 98-73            | 98-74           | 90-00-54  | 328-02-00 | 14.004 | 11.880  | -7.414  | -38190.668 | 31217.966 | 29.444 | 349.794720 |
| 98-74            | 98-75           | 89-59-33  | 238-01-33 | 12.985 | -6.876  | -11.015 | -38197.544 | 31206.951 | 11.015 | -75.739140 |
|                  |                 |           |           |        |         |         |            |           | 倍面積    | 363.704871 |
|                  |                 |           |           |        |         |         |            |           | 面積     | 181.85     |

<< 四街道南土地区画整理事業 >>

\* \* 面積計算 (倍横距法) \* \*

| 地<br>器械点 | 番 :<br>視準点 | 98-5<br>内角 | 方向角       | 距離     | 緯距      | 経距      | X座標        | Y座標       | 倍横距    | 倍面積        |
|----------|------------|------------|-----------|--------|---------|---------|------------|-----------|--------|------------|
| 98-76    | 98-71      | 90-00-35   | 148-02-00 | 14.002 | -11.878 | 7.413   | -38216.298 | 31203.350 | 7.413  | -88.051614 |
| 98-71    | 98-72      | 90-00-06   | 58-02-06  | 12.984 | 6.873   | 11.015  | -38209.425 | 31214.365 | 25.841 | 177.605193 |
| 98-72    | 98-75      | 89-59-54   | 328-02-00 | 14.004 | 11.881  | -7.414  | -38197.544 | 31206.951 | 29.442 | 349.800402 |
| 98-75    | 98-76      | 89-59-25   | 238-01-25 | 12.984 | -6.876  | -11.014 | -38204.420 | 31195.937 | 11.014 | -75.732264 |
|          |            |            |           |        |         |         |            |           | 倍面積    | 363.621717 |
|          |            |            |           |        |         |         |            |           | 面積     | 181.81     |

\* \* 面積計算 (倍横距法) \* \*

| 地<br>器械点 | 番 :<br>視準点 | 98-6<br>内角 | 方向角       | 距離     | 緯距      | 経距     | X座標        | Y座標       | 倍横距    | 倍面積        |
|----------|------------|------------|-----------|--------|---------|--------|------------|-----------|--------|------------|
| 98-77    | 98-5       | 110-50-00  | 168-52-00 | 10.577 | -10.378 | 2.042  | -38221.009 | 31188.026 | 2.042  | -21.191876 |
| 98-5     | 98-6       | 124-05-39  | 112-57-39 | 5.029  | -1.962  | 4.631  | -38222.971 | 31192.657 | 8.715  | -17.098830 |
| 98-6     | 98-71      | 125-04-27  | 58-02-06  | 12.604 | 6.673   | 10.693 | -38216.298 | 31203.350 | 24.039 | 160.412247 |
| 98-71    | 98-76      | 89-59-54   | 328-02-00 | 14.002 | 11.878  | -7.413 | -38204.420 | 31195.937 | 27.319 | 324.495082 |
| 98-76    | 98-77      | 90-00-00   | 238-02-00 | 11.732 | -6.211  | -9.953 | -38210.631 | 31185.984 | 9.953  | -61.818083 |
|          |            |            |           |        |         |        |            |           | 倍面積    | 384.798540 |
|          |            |            |           |        |         |        |            |           | 面積     | 192.39     |