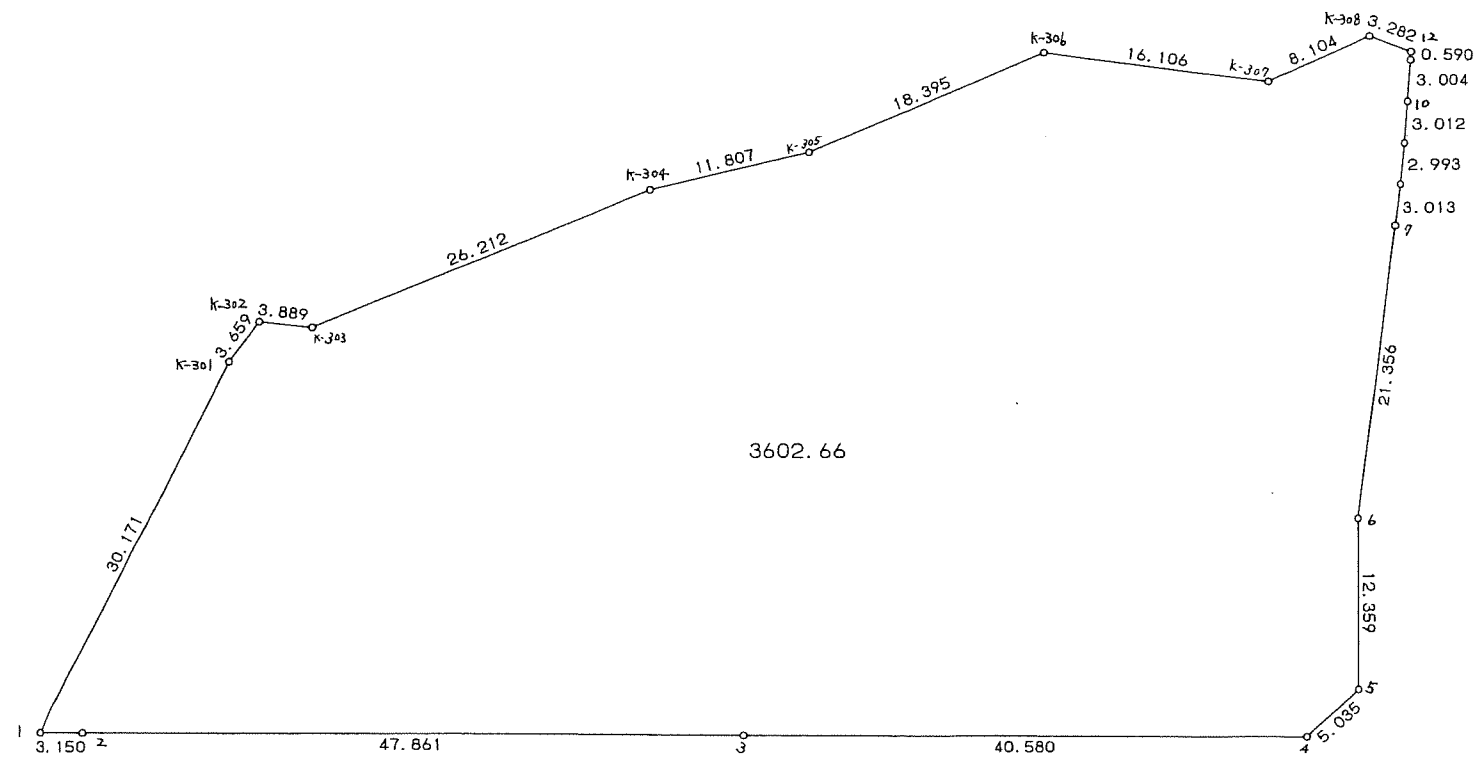
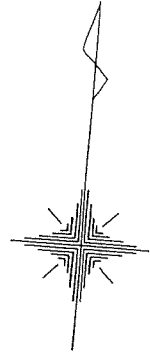


92街区



<< 四街道南土地区画整理事業 >>

* * 面積計算 (倍横距法) * *

地 器械点	番 : 視準点	92 BL 内角	方向角	距離	緯距	経距	X座標	Y座標	倍横距	倍面積
K-308	K-307	135-53-08	241-08-43	8.104	-3.911	-7.098	-38437.055	30924.573	-7.098	27.760278
K-307	K-306	211-52-35	273-01-18	16.106	0.849	-16.084	-38436.206	30908.489	-30.280	-25.707720
K-306	K-305	149-29-43	242-31-01	18.395	-8.489	-16.319	-38444.695	30892.170	-62.683	532.115987
K-305	K-304	189-30-03	252-01-04	11.807	-3.645	-11.230	-38448.340	30880.940	-90.232	328.895640
K-304	K-303	171-03-37	243-04-41	26.212	-11.868	-23.371	-38460.208	30857.569	-124.833	1481.518044
K-303	K-302	208-41-25	271-46-06	3.889	0.120	-3.887	-38460.088	30853.682	-152.091	-18.250920
K-302	K-301	121-26-38	213-12-44	3.659	-3.061	-2.004	-38463.149	30851.678	-157.982	483.582902
K-301	92-1	169-30-59	202-43-43	30.171	-27.828	-11.657	-38490.977	30840.021	-171.643	4776.481404
92-1	92-2	62-53-02	85-36-45	3.150	0.241	3.141	-38490.736	30843.162	-180.159	-43.418319
92-2	92-3	180-00-29	85-37-14	47.861	3.655	47.722	-38487.081	30890.884	-129.296	-472.576880
92-3	92-4	179-58-16	85-35-30	40.580	3.119	40.459	-38483.962	30931.343	-41.115	-128.237685
92-4	92-5	137-05-48	42-41-18	5.035	3.701	3.414	-38480.261	30934.757	2.758	10.207358
92-5	92-6	132-23-43	355-05-01	12.359	12.313	-1.059	-38467.948	30933.698	5.113	62.956369
92-6	92-7	187-33-07	2-38-08	21.356	21.334	0.982	-38446.614	30934.680	5.036	107.438024
92-7	92-8	179-55-03	2-33-11	3.013	3.009	0.134	-38443.605	30934.814	6.152	18.511368
92-8	92-9	178-50-57	1-24-08	2.993	2.992	0.073	-38440.613	30934.887	6.359	19.026128
92-9	92-10	178-30-13	359-54-21	3.012	3.012	-0.005	-38437.601	30934.882	6.427	19.358124
92-10	92-11	179-29-17	359-23-38	3.004	3.003	-0.032	-38434.598	30934.850	6.390	19.189170
92-11	92-12	179-17-13	358-40-51	0.590	0.590	-0.013	-38434.008	30934.837	6.345	3.743550
92-12	K-308	106-34-44	285-15-35	3.282	0.864	-3.166	-38433.144	30931.671	3.166	2.735424
									倍面積	7205.328246
									面積	3602.66