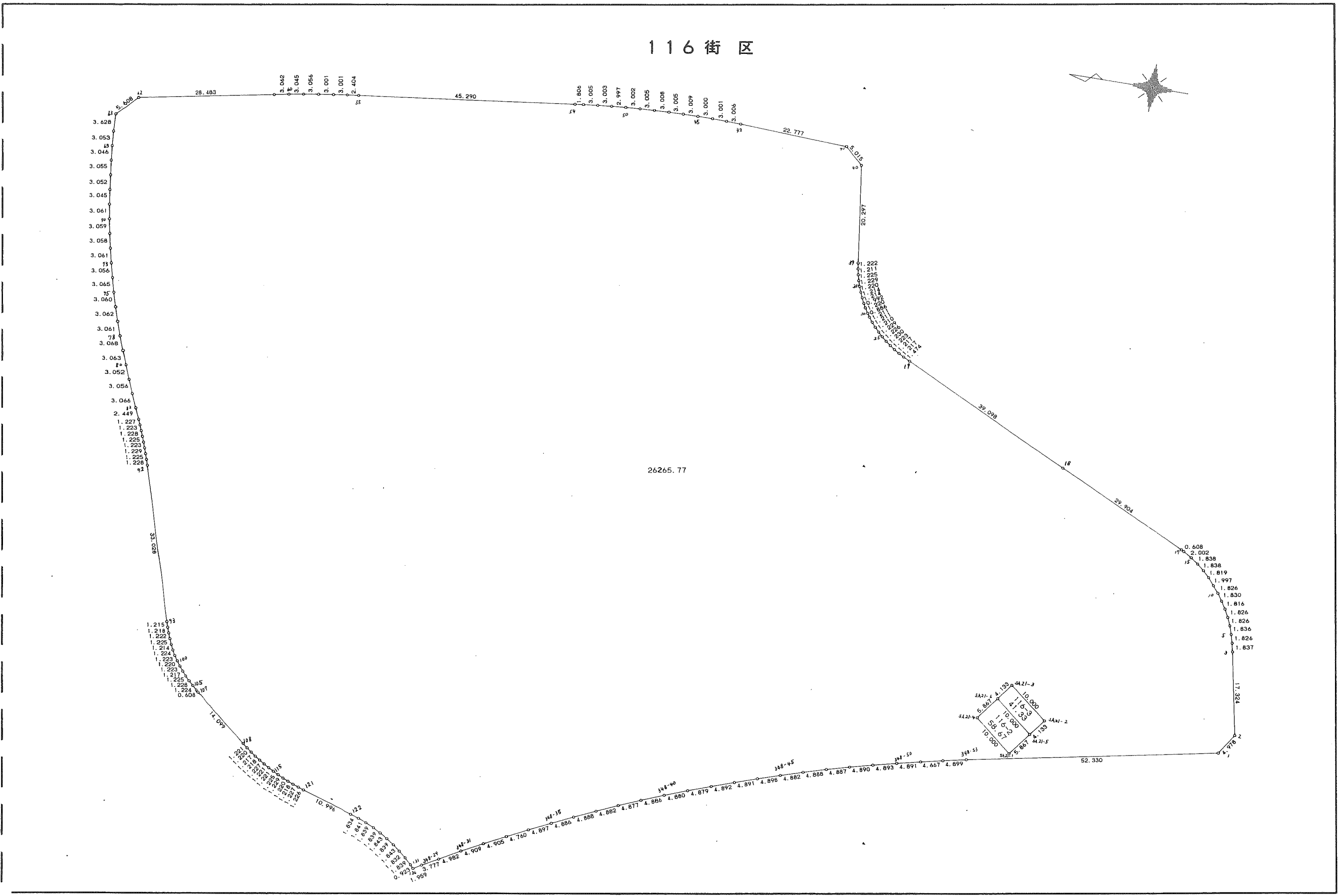
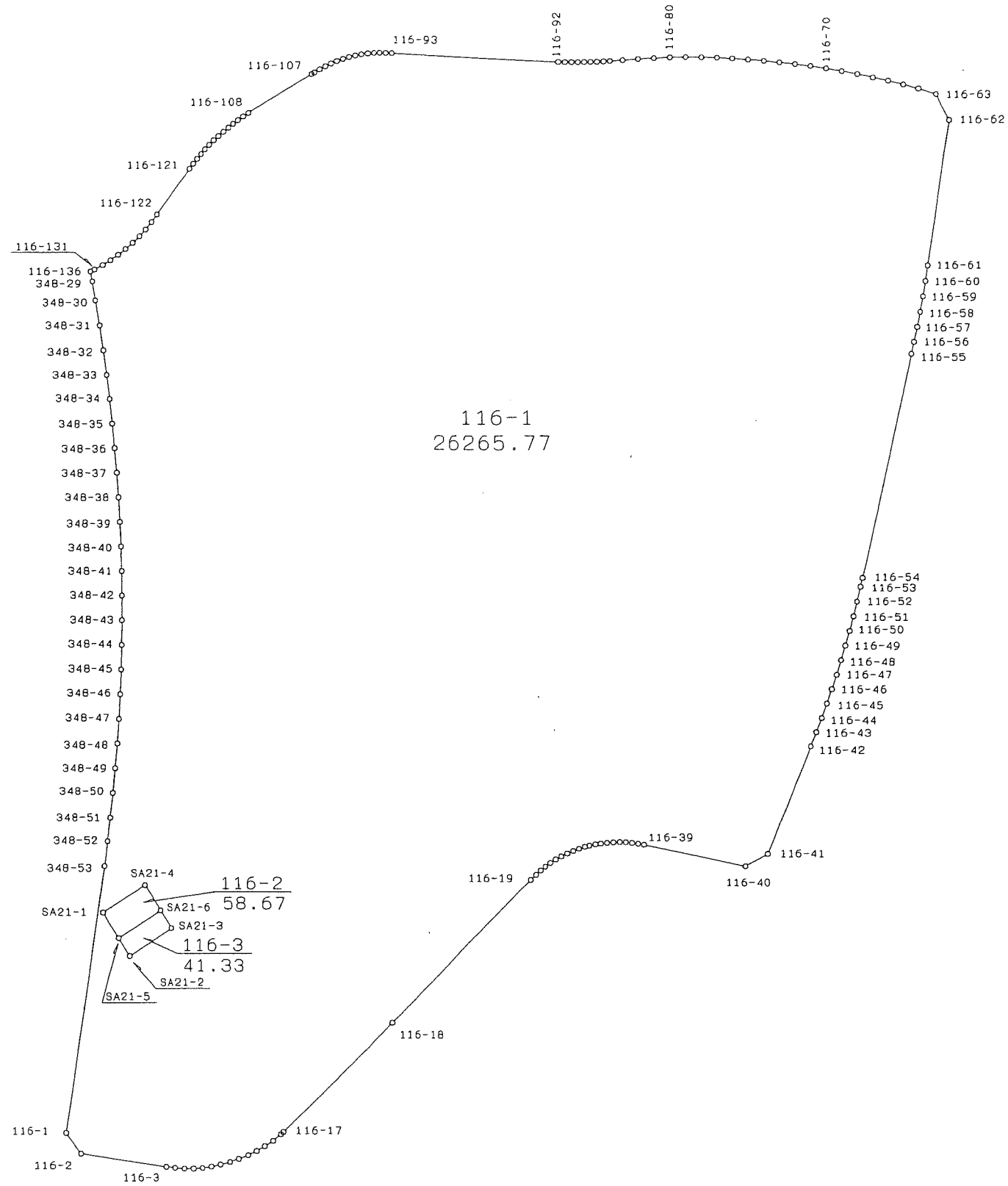
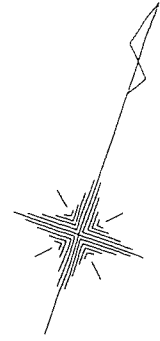


116 街区



四街道市四街道南特定土地区画整理事業

116街区



<< 四街道南土地区画整理事業 >>

* * 面積計算 (倍横距法) * *

地 器 械 点	番 : 視準点	116 BL 内角	方向角	距離	緯距	經距	X座標	Y座標	倍横距	倍面積
116-1	116-2	135-00-38	124-08-38	4.978	-2.794	4.120	-38254.883	31337.380	4.120	-11.511280
116-2	116-3	135-01-21	79-09-59	17.324	3.256	17.016	-38251.627	31354.396	25.256	82.233536
116-3	116-4	178-38-43	77-48-42	1.837	0.388	1.796	-38251.239	31356.192	44.068	17.098384
116-4	116-5	177-05-10	74-53-52	1.826	0.476	1.762	-38250.763	31357.954	47.626	22.669976
116-5	116-6	176-29-45	71-23-37	1.836	0.586	1.740	-38250.177	31359.694	51.128	29.961008
116-6	116-7	175-38-20	67-01-57	1.826	0.712	1.682	-38249.465	31361.376	54.550	38.839600
116-7	116-8	175-36-37	62-38-34	1.826	0.839	1.621	-38248.626	31362.997	57.853	48.538667
116-8	116-9	175-01-40	57-40-14	1.816	0.971	1.535	-38247.655	31364.532	61.009	59.239739
116-9	116-10	177-52-36	55-32-50	1.830	1.035	1.509	-38246.620	31366.041	64.053	66.294855
116-10	116-11	176-08-17	51-41-07	1.826	1.132	1.432	-38245.488	31367.473	66.994	75.837208
116-11	116-12	177-21-27	49-02-34	1.997	1.310	1.509	-38244.178	31368.982	69.935	91.614850
116-12	116-13	176-17-26	45-20-00	1.819	1.278	1.293	-38242.900	31370.275	72.737	92.957886
116-13	116-14	173-46-46	39-06-46	1.838	1.426	1.160	-38241.474	31371.435	75.190	107.220940
116-14	116-15	178-02-44	37-09-30	1.838	1.465	1.110	-38240.009	31372.545	77.460	113.478900
116-15	116-16	173-51-54	31-01-24	2.002	1.716	1.032	-38238.293	31373.577	79.602	136.597032
116-16	116-17	175-22-28	26-23-52	0.608	0.544	0.270	-38237.749	31373.847	80.904	44.011776
116-17	116-18	179-09-14	25-33-06	29.904	26.979	12.898	-38210.770	31386.745	94.072	2537.968488
116-18	116-19	179-51-02	25-24-08	39.098	35.318	16.772	-38175.452	31403.517	123.742	4370.319956
116-19	116-20	180-36-22	26-00-30	1.474	1.325	0.647	-38174.127	31404.164	141.161	187.038325
116-20	116-21	182-40-10	28-40-40	1.217	1.069	0.584	-38173.058	31404.748	142.392	152.217048
116-21	116-22	182-46-08	31-26-48	1.217	1.038	0.635	-38172.020	31405.383	143.611	149.068218
116-22	116-23	182-22-57	33-49-45	1.223	1.016	0.681	-38171.004	31406.064	144.927	147.245832
116-23	116-24	183-37-28	37-27-13	1.230	0.976	0.747	-38170.028	31406.811	146.355	142.842480
116-24	116-25	183-16-36	40-43-49	1.226	0.929	0.800	-38169.099	31407.611	147.902	137.400958
116-25	116-26	183-15-17	43-59-06	1.229	0.884	0.854	-38168.215	31408.465	149.556	132.207504

<< 四街道南土地区画整理事業 >>

器械点	視準点	内角	方向角	距離	緯距	経距	X座標	Y座標	倍横距	倍面積
116-26	116-27	182-11-41	46-10-47	1.210	0.837	0.872	-38167.378	31409.337	151.282	126.623034
116-27	116-28	183-23-09	49-33-56	1.211	0.786	0.922	-38166.592	31410.259	153.076	120.317736
116-28	116-29	181-47-53	51-21-49	1.211	0.756	0.946	-38165.836	31411.205	154.944	117.137664
116-29	116-30	185-21-06	56-42-55	0.886	0.487	0.741	-38165.349	31411.946	156.631	76.279297
116-30	116-31	181-39-42	58-22-37	1.220	0.639	1.039	-38164.710	31412.985	158.411	101.224629
116-31	116-32	184-13-58	62-36-35	0.992	0.457	0.881	-38164.253	31413.866	160.331	73.271267
116-32	116-33	181-19-19	63-55-54	1.214	0.533	1.090	-38163.720	31414.956	162.302	86.506966
116-33	116-34	182-03-14	65-59-08	1.214	0.494	1.109	-38163.226	31416.065	164.501	81.263494
116-34	116-35	182-04-49	68-03-57	1.220	0.456	1.132	-38162.770	31417.197	166.742	76.034352
116-35	116-36	184-07-32	72-11-29	1.229	0.376	1.170	-38162.394	31418.367	169.044	63.560544
116-36	116-37	183-57-45	76-09-14	1.225	0.293	1.189	-38162.101	31419.556	171.403	50.221079
116-37	116-38	182-22-42	78-31-56	1.211	0.241	1.186	-38161.860	31420.742	173.778	41.880498
116-38	116-39	182-39-17	81-11-13	1.222	0.187	1.208	-38161.673	31421.950	176.172	32.944164
116-39	116-40	181-19-41	82-30-54	20.297	2.644	20.124	-38159.029	31442.074	197.504	522.200576
116-40	116-41	139-21-57	41-52-51	5.015	3.734	3.348	-38155.295	31445.422	220.976	825.124384
116-41	116-42	140-24-53	2-17-44	22.777	22.758	0.912	-38132.537	31446.334	225.236	5125.920888
116-42	116-43	179-24-42	1-42-26	3.006	3.004	0.090	-38129.533	31446.424	226.238	679.618952
116-43	116-44	179-19-35	1-02-01	3.001	3.001	0.054	-38126.532	31446.478	226.382	679.372382
116-44	116-45	178-45-34	359-47-35	3.000	3.000	-0.011	-38123.532	31446.467	226.425	679.275000
116-45	116-46	179-25-23	359-12-58	3.009	3.009	-0.041	-38120.523	31446.426	226.373	681.156357
116-46	116-47	179-11-00	358-23-58	3.005	3.004	-0.084	-38117.519	31446.342	226.248	679.648992
116-47	116-48	178-49-10	357-13-08	3.008	3.004	-0.146	-38114.515	31446.196	226.018	678.958072
116-48	116-49	179-32-33	356-45-41	3.005	3.000	-0.170	-38111.515	31446.026	225.702	677.106000
116-49	116-50	179-20-27	356-06-08	3.002	2.995	-0.204	-38108.520	31445.822	225.328	674.857360
116-50	116-51	178-36-40	354-42-48	2.997	2.985	-0.276	-38105.535	31445.546	224.848	671.171280
116-51	116-52	179-13-34	353-56-22	3.003	2.987	-0.317	-38102.548	31445.229	224.255	669.849685

<< 四街道南土地区画整理事業 >>

器械点	視準点	内角	方向角	距離	緯距	経距	X座標	Y座標	倍横距	倍面積
116-52	116-53	179-33-58	353-30-20	3.005	2.985	-0.340	-38099.563	31444.889	223.598	667.440030
116-53	116-54	179-26-51	352-57-11	1.806	1.792	-0.221	-38097.771	31444.668	223.037	399.682304
116-54	116-55	179-44-11	352-41-22	45.290	44.922	-5.763	-38052.849	31438.905	217.053	9750.454866
116-55	116-56	179-47-35	352-28-57	2.404	2.384	-0.315	-38050.465	31438.590	210.975	502.964400
116-56	116-57	179-29-07	351-58-04	3.001	2.971	-0.419	-38047.494	31438.171	210.241	624.626011
116-57	116-58	179-48-37	351-46-41	3.001	2.970	-0.429	-38044.524	31437.742	209.393	621.897210
116-58	116-59	178-59-26	350-46-07	3.056	3.016	-0.490	-38041.508	31437.252	208.474	628.757584
116-59	116-60	179-26-24	350-12-31	3.045	3.001	-0.518	-38038.507	31436.734	207.466	622.605466
116-60	116-61	178-51-52	349-04-23	3.062	3.006	-0.581	-38035.501	31436.153	206.367	620.339202
116-61	116-62	180-02-42	349-07-05	28.483	27.971	-5.377	-38007.530	31430.776	200.409	5605.640139
116-62	116-63	144-07-38	313-14-43	5.608	3.843	-4.085	-38003.687	31426.691	190.947	733.809321
116-63	116-64	134-29-02	267-43-45	3.628	-0.144	-3.625	-38003.831	31423.066	183.237	-26.386128
116-64	116-65	177-52-01	265-35-46	3.053	-0.235	-3.044	-38004.066	31420.022	176.568	-41.493480
116-65	116-66	178-36-19	264-12-05	3.046	-0.307	-3.030	-38004.373	31416.992	170.494	-52.341658
116-66	116-67	178-40-59	262-53-04	3.055	-0.379	-3.032	-38004.752	31413.960	164.432	-62.319728
116-67	116-68	179-56-04	262-49-08	3.052	-0.381	-3.028	-38005.133	31410.932	158.372	-60.339732
116-68	116-69	179-18-04	262-07-12	3.045	-0.418	-3.017	-38005.551	31407.915	152.327	-63.672686
116-69	116-70	178-26-23	260-33-35	3.061	-0.502	-3.019	-38006.053	31404.896	146.291	-73.438082
116-70	116-71	178-38-14	259-11-49	3.059	-0.573	-3.005	-38006.626	31401.891	140.267	-80.372991
116-71	116-72	178-46-24	257-58-13	3.058	-0.638	-2.991	-38007.264	31398.900	134.271	-85.664898
116-72	116-73	178-50-44	256-48-57	3.061	-0.698	-2.980	-38007.962	31395.920	128.300	-89.553400
116-73	116-74	179-08-17	255-57-14	3.056	-0.741	-2.965	-38008.703	31392.955	122.355	-90.665055
116-74	116-75	179-16-19	255-13-33	3.065	-0.782	-2.964	-38009.485	31389.991	116.426	-91.045132
116-75	116-76	178-53-15	254-06-48	3.060	-0.838	-2.942	-38010.323	31387.049	110.520	-92.615760
116-76	116-77	179-05-52	253-12-40	3.062	-0.884	-2.932	-38011.207	31384.117	104.646	-92.507064
116-77	116-78	178-52-55	252-05-35	3.061	-0.941	-2.912	-38012.148	31381.205	98.802	-92.972682

<< 四街道南土地区画整理事業 >>

器械点	視準点	内角	方向角	距離	緯距	經距	X座標	Y座標	倍横距	倍面積
116-78	116-79	179-15-46	251-21-21	3.068	-0.981	-2.908	-38013.129	31378.297	92.982	-91.215342
116-79	116-80	178-20-12	249-41-33	3.063	-1.063	-2.872	-38014.192	31375.425	87.202	-92.695726
116-80	116-81	178-30-49	248-12-22	3.052	-1.133	-2.835	-38015.325	31372.590	81.495	-92.333835
116-81	116-82	179-25-26	247-37-48	3.056	-1.163	-2.826	-38016.488	31369.764	75.834	-88.194942
116-82	116-83	179-33-12	247-11-00	3.066	-1.189	-2.825	-38017.677	31366.939	70.183	-83.447587
116-83	116-84	179-41-30	246-52-30	2.449	-0.962	-2.253	-38018.639	31364.686	65.105	-62.631010
116-84	116-85	180-14-59	247-07-29	1.227	-0.477	-1.130	-38019.116	31363.556	61.722	-29.441394
116-85	116-86	180-44-36	247-52-05	1.223	-0.461	-1.134	-38019.577	31362.422	59.458	-27.410138
116-86	116-87	180-53-48	248-45-53	1.228	-0.445	-1.144	-38020.022	31361.278	57.180	-25.445100
116-87	116-88	180-24-03	249-09-56	1.225	-0.435	-1.145	-38020.457	31360.133	54.891	-23.877585
116-88	116-89	180-38-23	249-48-19	1.223	-0.423	-1.148	-38020.880	31358.985	52.598	-22.248954
116-89	116-90	180-44-41	250-33-00	1.229	-0.409	-1.158	-38021.289	31357.827	50.292	-20.569428
116-90	116-91	180-42-07	251-15-07	1.225	-0.394	-1.161	-38021.683	31356.666	47.973	-18.901362
116-91	116-92	181-02-52	252-17-59	1.228	-0.373	-1.170	-38022.056	31355.496	45.642	-17.024466
116-92	116-93	181-05-27	253-23-26	33.028	-9.441	-31.650	-38031.497	31323.846	12.822	-121.052502
116-93	116-94	179-24-08	252-47-34	1.215	-0.360	-1.161	-38031.857	31322.685	-19.989	7.196040
116-94	116-95	178-04-48	250-52-22	1.218	-0.399	-1.150	-38032.256	31321.535	-22.300	8.897700
116-95	116-96	178-10-01	249-02-23	1.222	-0.437	-1.141	-38032.693	31320.394	-24.591	10.746267
116-96	116-97	177-27-01	246-29-24	1.225	-0.488	-1.123	-38033.181	31319.271	-26.855	13.105240
116-97	116-98	176-48-32	243-17-56	1.214	-0.546	-1.085	-38033.727	31318.186	-29.063	15.868398
116-98	116-99	176-46-21	240-04-17	1.224	-0.611	-1.061	-38034.338	31317.125	-31.209	19.068699
116-99	116-100	175-26-45	235-31-02	1.223	-0.693	-1.009	-38035.031	31316.116	-33.279	23.062347
116-100	116-101	178-01-57	233-32-59	1.220	-0.724	-0.981	-38035.755	31315.135	-35.269	25.534756
116-101	116-102	177-12-51	230-45-50	1.223	-0.774	-0.948	-38036.529	31314.187	-37.198	28.791252
116-102	116-103	176-55-45	227-41-35	1.217	-0.819	-0.900	-38037.348	31313.287	-39.046	31.978674
116-103	116-104	177-05-49	224-47-24	1.225	-0.870	-0.863	-38038.218	31312.424	-40.809	35.503830

<< 四街道南土地区画整理事業 >>

器械点	視準点	内角	方向角	距離	緯距	経距	X座標	Y座標	倍横距	倍面積
116-104	116-105	177-53-31	222-40-55	1.228	-0.902	-0.832	-38039.120	31311.592	-42.504	38.338608
116-105	116-106	177-36-29	220-17-24	1.224	-0.934	-0.792	-38040.054	31310.800	-44.128	41.215552
116-106	116-107	179-16-46	219-34-10	0.608	-0.469	-0.387	-38040.523	31310.413	-45.307	21.248983
116-107	116-108	179-13-42	218-47-52	14.099	-10.988	-8.834	-38051.511	31301.579	-54.528	599.153664
116-108	116-109	178-35-22	217-23-14	1.221	-0.970	-0.742	-38052.481	31300.837	-64.104	62.180880
116-109	116-110	178-18-31	215-41-45	1.220	-0.991	-0.712	-38053.472	31300.125	-65.558	64.967978
116-110	116-111	178-29-49	214-11-34	1.217	-1.007	-0.684	-38054.479	31299.441	-66.954	67.422678
116-111	116-112	178-28-14	212-39-48	1.218	-1.025	-0.657	-38055.504	31298.784	-68.295	70.002375
116-112	116-113	178-02-29	210-42-17	1.227	-1.055	-0.626	-38056.559	31298.158	-69.578	73.404790
116-113	116-114	178-44-42	209-26-59	1.221	-1.063	-0.601	-38057.622	31297.557	-70.805	75.265715
116-114	116-115	178-38-46	208-05-45	1.221	-1.077	-0.575	-38058.699	31296.982	-71.981	77.523537
116-115	116-116	178-09-43	206-15-28	1.225	-1.099	-0.542	-38059.798	31296.440	-73.098	80.334702
116-116	116-117	178-54-38	205-10-06	1.229	-1.112	-0.522	-38060.910	31295.918	-74.162	82.468144
116-117	116-118	177-57-17	203-07-23	1.220	-1.122	-0.479	-38062.032	31295.439	-75.163	84.332886
116-118	116-119	177-52-44	201-00-07	1.218	-1.137	-0.437	-38063.169	31295.002	-76.079	86.501823
116-119	116-120	178-45-35	199-45-42	1.227	-1.155	-0.415	-38064.324	31294.587	-76.931	88.855305
116-120	116-121	178-50-29	198-36-11	1.226	-1.162	-0.391	-38065.486	31294.196	-77.737	90.330394
116-121	116-122	178-52-01	197-28-12	10.996	-10.489	-3.301	-38075.975	31290.895	-81.429	854.108781
116-122	116-123	179-51-26	197-19-38	1.834	-1.750	-0.546	-38077.725	31290.349	-85.276	149.233000
116-123	116-124	182-32-43	199-52-21	1.841	-1.732	-0.626	-38079.457	31289.723	-86.448	149.727936
116-124	116-125	183-48-54	203-41-15	1.839	-1.684	-0.739	-38081.141	31288.984	-87.813	147.877092
116-125	116-126	183-06-03	206-47-18	1.839	-1.641	-0.829	-38082.782	31288.155	-89.381	146.674221
116-126	116-127	183-18-08	210-05-26	1.843	-1.595	-0.924	-38084.377	31287.231	-91.134	145.358730
116-127	116-128	183-44-47	213-50-13	1.839	-1.528	-1.024	-38085.905	31286.207	-93.082	142.229296
116-128	116-129	182-51-08	216-41-21	1.843	-1.478	-1.101	-38087.383	31285.106	-95.207	140.715946
116-129	116-130	182-31-48	219-13-09	1.832	-1.419	-1.158	-38088.802	31283.948	-97.466	138.304254

<< 四街道南土地区画整理事業 >>

器械点	視準点	内角	方向角	距離	緯距	經距	X座標	Y座標	倍横距	倍面積
116-130	116-131	183-05-18	222-18-27	1.839	-1.360	-1.238	-38090.162	31282.710	-99.862	135.812320
116-131	116-136	183-43-50	226-02-17	0.923	-0.641	-0.664	-38090.803	31282.046	-101.764	65.230724
116-136	348-29	103-40-16	149-42-33	1.959	-1.692	0.988	-38092.495	31283.034	-101.440	171.636480
348-29	348-30	181-24-59	151-07-32	3.777	-3.307	1.824	-38095.802	31284.858	-98.628	326.162796
348-30	348-31	179-30-39	150-38-11	4.982	-4.342	2.443	-38100.144	31287.301	-94.361	409.715462
348-31	348-32	181-44-26	152-22-37	4.909	-4.349	2.275	-38104.493	31289.576	-89.643	389.857407
348-32	348-33	180-24-48	152-47-25	4.905	-4.362	2.243	-38108.855	31291.819	-85.125	371.315250
348-33	348-34	180-37-48	153-25-13	4.760	-4.257	2.130	-38113.112	31293.949	-80.752	343.761264
348-34	348-35	181-09-10	154-34-23	4.897	-4.423	2.103	-38117.535	31296.052	-76.519	338.443537
348-35	348-36	180-37-33	155-11-56	4.886	-4.436	2.050	-38121.971	31298.102	-72.366	321.015576
348-36	348-37	180-45-07	155-57-03	4.888	-4.464	1.992	-38126.435	31300.094	-68.324	304.998336
348-37	348-38	180-40-23	156-37-26	4.882	-4.481	1.937	-38130.916	31302.031	-64.395	288.553995
348-38	348-39	181-02-42	157-40-08	4.877	-4.511	1.853	-38135.427	31303.884	-60.605	273.389155
348-39	348-40	180-35-42	158-15-50	4.886	-4.538	1.809	-38139.965	31305.693	-56.943	258.407334
348-40	348-41	180-53-28	159-09-18	4.880	-4.561	1.736	-38144.526	31307.429	-53.398	243.548278
348-41	348-42	180-58-16	160-07-34	4.879	-4.588	1.659	-38149.114	31309.088	-50.003	229.413764
348-42	348-43	180-42-46	160-50-20	4.892	-4.621	1.606	-38153.735	31310.694	-46.738	215.976298
348-43	348-44	180-28-14	161-18-34	4.891	-4.633	1.567	-38158.368	31312.261	-43.565	201.836645
348-44	348-45	180-50-28	162-09-02	4.898	-4.663	1.501	-38163.031	31313.762	-40.497	188.837511
348-45	348-46	180-41-40	162-50-42	4.882	-4.665	1.440	-38167.696	31315.202	-37.556	175.198740
348-46	348-47	180-40-58	163-31-40	4.888	-4.687	1.386	-38172.383	31316.588	-34.730	162.779510
348-47	348-48	181-09-39	164-41-19	4.887	-4.714	1.291	-38177.097	31317.879	-32.053	151.097842
348-48	348-49	180-56-57	165-38-16	4.890	-4.737	1.213	-38181.834	31319.092	-29.549	139.973613
348-49	348-50	180-34-07	166-12-23	4.893	-4.752	1.167	-38186.586	31320.259	-27.169	129.107088
348-50	348-51	180-39-10	166-51-33	4.891	-4.763	1.112	-38191.349	31321.371	-24.890	118.551070
348-51	348-52	180-39-54	167-31-27	4.667	-4.557	1.008	-38195.906	31322.379	-22.770	103.762890

<< 四街道南土地区画整理事業 >>

器械点	視準点	内角	方向角	距離	緯距	経距	X座標	Y座標	倍横距	倍面積
348-52	348-53	180-30-14	168-01-41	4.899	-4.792	1.016	-38200.698	31323.395	-20.746	99.414832
348-53	116-1	181-06-19	169-08-00	52.330	-51.391	9.865	-38252.089	31333.260	-9.865	506.972215
									倍面積	52731.555629
									面積	26365.77

<< 四街道南土地区画整理事業 >>

地番	種別	面積	坪数
116-1	境界点	26265.7700000	7945.39
116-2	境界点	58.6700000	17.74
116-3	境界点	41.3300000	12.50
	合計	26365.7700000	7975.64

<< 四街道南土地区画整理事業 >>

* * 面積計算 (倍横距法) * *

地 器械点	番 : 116-1 視準点	内角	方向角	距離	緯距	経距	X座標	Y座標	倍横距	倍面積
116-1	116-2	135-00-38	124-08-38	4.978	-2.794	4.120	-38254.883	31337.380	4.120	-11.511280
116-2	116-3	135-01-21	79-09-59	17.324	3.256	17.016	-38251.627	31354.396	25.256	82.233536
116-3	116-4	178-38-43	77-48-42	1.837	0.388	1.796	-38251.239	31356.192	44.068	17.098384
116-4	116-5	177-05-10	74-53-52	1.826	0.476	1.762	-38250.763	31357.954	47.626	22.669976
116-5	116-6	176-29-45	71-23-37	1.836	0.586	1.740	-38250.177	31359.694	51.128	29.961008
116-6	116-7	175-38-20	67-01-57	1.826	0.712	1.682	-38249.465	31361.376	54.550	38.839600
116-7	116-8	175-36-37	62-38-34	1.826	0.839	1.621	-38248.626	31362.997	57.853	48.538667
116-8	116-9	175-01-40	57-40-14	1.816	0.971	1.535	-38247.655	31364.532	61.009	59.239739
116-9	116-10	177-52-36	55-32-50	1.830	1.035	1.509	-38246.620	31366.041	64.053	66.294855
116-10	116-11	176-08-17	51-41-07	1.826	1.132	1.432	-38245.488	31367.473	66.994	75.837208
116-11	116-12	177-21-27	49-02-34	1.997	1.310	1.509	-38244.178	31368.982	69.935	91.614850
116-12	116-13	176-17-26	45-20-00	1.819	1.278	1.293	-38242.900	31370.275	72.737	92.957886
116-13	116-14	173-46-46	39-06-46	1.838	1.426	1.160	-38241.474	31371.435	75.190	107.220940
116-14	116-15	178-02-44	37-09-30	1.838	1.465	1.110	-38240.009	31372.545	77.460	113.478900
116-15	116-16	173-51-54	31-01-24	2.002	1.716	1.032	-38238.293	31373.577	79.602	136.597032
116-16	116-17	175-22-28	26-23-52	0.608	0.544	0.270	-38237.749	31373.847	80.904	44.011776
116-17	116-18	179-09-14	25-33-06	29.904	26.979	12.898	-38210.770	31386.745	94.072	2537.968488
116-18	116-19	179-51-02	25-24-08	39.098	35.318	16.772	-38175.452	31403.517	123.742	4370.319956
116-19	116-20	180-36-22	26-00-30	1.474	1.325	0.647	-38174.127	31404.164	141.161	187.038325
116-20	116-21	182-40-10	28-40-40	1.217	1.069	0.584	-38173.058	31404.748	142.392	152.217048
116-21	116-22	182-46-08	31-26-48	1.217	1.038	0.635	-38172.020	31405.383	143.611	149.068218
116-22	116-23	182-22-57	33-49-45	1.223	1.016	0.681	-38171.004	31406.064	144.927	147.245832
116-23	116-24	183-37-28	37-27-13	1.230	0.976	0.747	-38170.028	31406.811	146.355	142.842480
116-24	116-25	183-16-36	40-43-49	1.226	0.929	0.800	-38169.099	31407.611	147.902	137.400958
116-25	116-26	183-15-17	43-59-06	1.229	0.884	0.854	-38168.215	31408.465	149.556	132.207504

<< 四街道南土地区画整理事業 >>

器械点	視準点	内角	方向角	距離	緯距	経距	X座標	Y座標	倍横距	倍面積
116-26	116-27	182-11-41	46-10-47	1.210	0.837	0.872	-38167.378	31409.337	151.282	126.623034
116-27	116-28	183-23-09	49-33-56	1.211	0.786	0.922	-38166.592	31410.259	153.076	120.317736
116-28	116-29	181-47-53	51-21-49	1.211	0.756	0.946	-38165.836	31411.205	154.944	117.137664
116-29	116-30	185-21-06	56-42-55	0.886	0.487	0.741	-38165.349	31411.946	156.631	76.279297
116-30	116-31	181-39-42	58-22-37	1.220	0.639	1.039	-38164.710	31412.985	158.411	101.224629
116-31	116-32	184-13-58	62-36-35	0.992	0.457	0.881	-38164.253	31413.866	160.331	73.271267
116-32	116-33	181-19-19	63-55-54	1.214	0.533	1.090	-38163.720	31414.956	162.302	86.506966
116-33	116-34	182-03-14	65-59-08	1.214	0.494	1.109	-38163.226	31416.065	164.501	81.263494
116-34	116-35	182-04-49	68-03-57	1.220	0.456	1.132	-38162.770	31417.197	166.742	76.034352
116-35	116-36	184-07-32	72-11-29	1.229	0.376	1.170	-38162.394	31418.367	169.044	63.560544
116-36	116-37	183-57-45	76-09-14	1.225	0.293	1.189	-38162.101	31419.556	171.403	50.221079
116-37	116-38	182-22-42	78-31-56	1.211	0.241	1.186	-38161.860	31420.742	173.778	41.880498
116-38	116-39	182-39-17	81-11-13	1.222	0.187	1.208	-38161.673	31421.950	176.172	32.944164
116-39	116-40	181-19-41	82-30-54	20.297	2.644	20.124	-38159.029	31442.074	197.504	522.200576
116-40	116-41	139-21-57	41-52-51	5.015	3.734	3.348	-38155.295	31445.422	220.976	825.124384
116-41	116-42	140-24-53	2-17-44	22.777	22.758	0.912	-38132.537	31446.334	225.236	5125.920888
116-42	116-43	179-24-42	1-42-26	3.006	3.004	0.090	-38129.533	31446.424	226.238	679.618952
116-43	116-44	179-19-35	1-02-01	3.001	3.001	0.054	-38126.532	31446.478	226.382	679.372382
116-44	116-45	178-45-34	359-47-35	3.000	3.000	-0.011	-38123.532	31446.467	226.425	679.275000
116-45	116-46	179-25-23	359-12-58	3.009	3.009	-0.041	-38120.523	31446.426	226.373	681.156357
116-46	116-47	179-11-00	358-23-58	3.005	3.004	-0.084	-38117.519	31446.342	226.248	679.648992
116-47	116-48	178-49-10	357-13-08	3.008	3.004	-0.146	-38114.515	31446.196	226.018	678.958072
116-48	116-49	179-32-33	356-45-41	3.005	3.000	-0.170	-38111.515	31446.026	225.702	677.106000
116-49	116-50	179-20-27	356-06-08	3.002	2.995	-0.204	-38108.520	31445.822	225.328	674.857360
116-50	116-51	178-36-40	354-42-48	2.997	2.985	-0.276	-38105.535	31445.546	224.848	671.171280
116-51	116-52	179-13-34	353-56-22	3.003	2.987	-0.317	-38102.548	31445.229	224.255	669.849685

<< 四街道南土地区画整理事業 >>

器械点	視準点	内角	方向角	距離	緯距	経距	X座標	Y座標	倍横距	倍面積
116-52	116-53	179-33-58	353-30-20	3.005	2.985	-0.340	-38099.563	31444.889	223.598	667.440030
116-53	116-54	179-26-51	352-57-11	1.806	1.792	-0.221	-38097.771	31444.668	223.037	399.682304
116-54	116-55	179-44-11	352-41-22	45.290	44.922	-5.763	-38052.849	31438.905	217.053	9750.454866
116-55	116-56	179-47-35	352-28-57	2.404	2.384	-0.315	-38050.465	31438.590	210.975	502.964400
116-56	116-57	179-29-07	351-58-04	3.001	2.971	-0.419	-38047.494	31438.171	210.241	624.626011
116-57	116-58	179-48-37	351-46-41	3.001	2.970	-0.429	-38044.524	31437.742	209.393	621.897210
116-58	116-59	178-59-26	350-46-07	3.056	3.016	-0.490	-38041.508	31437.252	208.474	628.757584
116-59	116-60	179-26-24	350-12-31	3.045	3.001	-0.518	-38038.507	31436.734	207.466	622.605466
116-60	116-61	178-51-52	349-04-23	3.062	3.006	-0.581	-38035.501	31436.153	206.367	620.339202
116-61	116-62	180-02-42	349-07-05	28.483	27.971	-5.377	-38007.530	31430.776	200.409	5605.640139
116-62	116-63	144-07-38	313-14-43	5.608	3.843	-4.085	-38003.687	31426.691	190.947	733.809321
116-63	116-64	134-29-02	267-43-45	3.628	-0.144	-3.625	-38003.831	31423.066	183.237	-26.386128
116-64	116-65	177-52-01	265-35-46	3.053	-0.235	-3.044	-38004.066	31420.022	176.568	-41.493480
116-65	116-66	178-36-19	264-12-05	3.046	-0.307	-3.030	-38004.373	31416.992	170.494	-52.341658
116-66	116-67	178-40-59	262-53-04	3.055	-0.379	-3.032	-38004.752	31413.960	164.432	-62.319728
116-67	116-68	179-56-04	262-49-08	3.052	-0.381	-3.028	-38005.133	31410.932	158.372	-60.339732
116-68	116-69	179-18-04	262-07-12	3.045	-0.418	-3.017	-38005.551	31407.915	152.327	-63.672686
116-69	116-70	178-26-23	260-33-35	3.061	-0.502	-3.019	-38006.053	31404.896	146.291	-73.438082
116-70	116-71	178-38-14	259-11-49	3.059	-0.573	-3.005	-38006.626	31401.891	140.267	-80.372991
116-71	116-72	178-46-24	257-58-13	3.058	-0.638	-2.991	-38007.264	31398.900	134.271	-85.664898
116-72	116-73	178-50-44	256-48-57	3.061	-0.698	-2.980	-38007.962	31395.920	128.300	-89.553400
116-73	116-74	179-08-17	255-57-14	3.056	-0.741	-2.965	-38008.703	31392.955	122.355	-90.665055
116-74	116-75	179-16-19	255-13-33	3.065	-0.782	-2.964	-38009.485	31389.991	116.426	-91.045132
116-75	116-76	178-53-15	254-06-48	3.060	-0.838	-2.942	-38010.323	31387.049	110.520	-92.615760
116-76	116-77	179-05-52	253-12-40	3.062	-0.884	-2.932	-38011.207	31384.117	104.646	-92.507064
116-77	116-78	178-52-55	252-05-35	3.061	-0.941	-2.912	-38012.148	31381.205	98.802	-92.972682

<< 四街道南土地区画整理事業 >>

器械点	視準点	内角	方向角	距離	緯距	経距	X座標	Y座標	倍横距	倍面積
116-78	116-79	179-15-46	251-21-21	3.068	-0.981	-2.908	-38013.129	31378.297	92.982	-91.215342
116-79	116-80	178-20-12	249-41-33	3.063	-1.063	-2.872	-38014.192	31375.425	87.202	-92.695726
116-80	116-81	178-30-49	248-12-22	3.052	-1.133	-2.835	-38015.325	31372.590	81.495	-92.333835
116-81	116-82	179-25-26	247-37-48	3.056	-1.163	-2.826	-38016.488	31369.764	75.834	-88.194942
116-82	116-83	179-33-12	247-11-00	3.066	-1.189	-2.825	-38017.677	31366.939	70.183	-83.447587
116-83	116-84	179-41-30	246-52-30	2.449	-0.962	-2.253	-38018.639	31364.686	65.105	-62.631010
116-84	116-85	180-14-59	247-07-29	1.227	-0.477	-1.130	-38019.116	31363.556	61.722	-29.441394
116-85	116-86	180-44-36	247-52-05	1.223	-0.461	-1.134	-38019.577	31362.422	59.458	-27.410138
116-86	116-87	180-53-48	248-45-53	1.228	-0.445	-1.144	-38020.022	31361.278	57.180	-25.445100
116-87	116-88	180-24-03	249-09-56	1.225	-0.435	-1.145	-38020.457	31360.133	54.891	-23.877585
116-88	116-89	180-38-23	249-48-19	1.223	-0.423	-1.148	-38020.880	31358.985	52.598	-22.248954
116-89	116-90	180-44-41	250-33-00	1.229	-0.409	-1.158	-38021.289	31357.827	50.292	-20.569428
116-90	116-91	180-42-07	251-15-07	1.225	-0.394	-1.161	-38021.683	31356.666	47.973	-18.901362
116-91	116-92	181-02-52	252-17-59	1.228	-0.373	-1.170	-38022.056	31355.496	45.642	-17.024466
116-92	116-93	181-05-27	253-23-26	33.028	-9.441	-31.650	-38031.497	31323.846	12.822	-121.052502
116-93	116-94	179-24-08	252-47-34	1.215	-0.360	-1.161	-38031.857	31322.685	-19.989	7.196040
116-94	116-95	178-04-48	250-52-22	1.218	-0.399	-1.150	-38032.256	31321.535	-22.300	8.897700
116-95	116-96	178-10-01	249-02-23	1.222	-0.437	-1.141	-38032.693	31320.394	-24.591	10.746267
116-96	116-97	177-27-01	246-29-24	1.225	-0.488	-1.123	-38033.181	31319.271	-26.855	13.105240
116-97	116-98	176-48-32	243-17-56	1.214	-0.546	-1.085	-38033.727	31318.186	-29.063	15.868398
116-98	116-99	176-46-21	240-04-17	1.224	-0.611	-1.061	-38034.338	31317.125	-31.209	19.068699
116-99	116-100	175-26-45	235-31-02	1.223	-0.693	-1.009	-38035.031	31316.116	-33.279	23.062347
116-100	116-101	178-01-57	233-32-59	1.220	-0.724	-0.981	-38035.755	31315.135	-35.269	25.534756
116-101	116-102	177-12-51	230-45-50	1.223	-0.774	-0.948	-38036.529	31314.187	-37.198	28.791252
116-102	116-103	176-55-45	227-41-35	1.217	-0.819	-0.900	-38037.348	31313.287	-39.046	31.978674
116-103	116-104	177-05-49	224-47-24	1.225	-0.870	-0.863	-38038.218	31312.424	-40.809	35.503830

<< 四街道南土地区画整理事業 >>

器械点	視準点	内角	方向角	距離	緯距	経距	X座標	Y座標	倍横距	倍面積
116-104	116-105	177-53-31	222-40-55	1.228	-0.902	-0.832	-38039.120	31311.592	-42.504	38.338608
116-105	116-106	177-36-29	220-17-24	1.224	-0.934	-0.792	-38040.054	31310.800	-44.128	41.215552
116-106	116-107	179-16-46	219-34-10	0.608	-0.469	-0.387	-38040.523	31310.413	-45.307	21.248983
116-107	116-108	179-13-42	218-47-52	14.099	-10.988	-8.834	-38051.511	31301.579	-54.528	599.153664
116-108	116-109	178-35-22	217-23-14	1.221	-0.970	-0.742	-38052.481	31300.837	-64.104	62.180880
116-109	116-110	178-18-31	215-41-45	1.220	-0.991	-0.712	-38053.472	31300.125	-65.558	64.967978
116-110	116-111	178-29-49	214-11-34	1.217	-1.007	-0.684	-38054.479	31299.441	-66.954	67.422678
116-111	116-112	178-28-14	212-39-48	1.218	-1.025	-0.657	-38055.504	31298.784	-68.295	70.002375
116-112	116-113	178-02-29	210-42-17	1.227	-1.055	-0.626	-38056.559	31298.158	-69.578	73.404790
116-113	116-114	178-44-42	209-26-59	1.221	-1.063	-0.601	-38057.622	31297.557	-70.805	75.265715
116-114	116-115	178-38-46	208-05-45	1.221	-1.077	-0.575	-38058.699	31296.982	-71.981	77.523537
116-115	116-116	178-09-43	206-15-28	1.225	-1.099	-0.542	-38059.798	31296.440	-73.098	80.334702
116-116	116-117	178-54-38	205-10-06	1.229	-1.112	-0.522	-38060.910	31295.918	-74.162	82.468144
116-117	116-118	177-57-17	203-07-23	1.220	-1.122	-0.479	-38062.032	31295.439	-75.163	84.332886
116-118	116-119	177-52-44	201-00-07	1.218	-1.137	-0.437	-38063.169	31295.002	-76.079	86.501823
116-119	116-120	178-45-35	199-45-42	1.227	-1.155	-0.415	-38064.324	31294.587	-76.931	88.855305
116-120	116-121	178-50-29	198-36-11	1.226	-1.162	-0.391	-38065.486	31294.196	-77.737	90.330394
116-121	116-122	178-52-01	197-28-12	10.996	-10.489	-3.301	-38075.975	31290.895	-81.429	854.108781
116-122	116-123	179-51-26	197-19-38	1.834	-1.750	-0.546	-38077.725	31290.349	-85.276	149.233000
116-123	116-124	182-32-43	199-52-21	1.841	-1.732	-0.626	-38079.457	31289.723	-86.448	149.727936
116-124	116-125	183-48-54	203-41-15	1.839	-1.684	-0.739	-38081.141	31288.984	-87.813	147.877092
116-125	116-126	183-06-03	206-47-18	1.839	-1.641	-0.829	-38082.782	31288.155	-89.381	146.674221
116-126	116-127	183-18-08	210-05-26	1.843	-1.595	-0.924	-38084.377	31287.231	-91.134	145.358730
116-127	116-128	183-44-47	213-50-13	1.839	-1.528	-1.024	-38085.905	31286.207	-93.082	142.229296
116-128	116-129	182-51-08	216-41-21	1.843	-1.478	-1.101	-38087.383	31285.106	-95.207	140.715946
116-129	116-130	182-31-48	219-13-09	1.832	-1.419	-1.158	-38088.802	31283.948	-97.466	138.304254

<< 四街道南土地区画整理事業 >>

器械点	視準点	内角	方向角	距離	緯距	経距	X座標	Y座標	倍横距	倍面積
116-130	116-131	183-05-18	222-18-27	1.839	-1.360	-1.238	-38090.162	31282.710	-99.862	135.812320
116-131	116-136	183-43-50	226-02-17	0.923	-0.641	-0.664	-38090.803	31282.046	-101.764	65.230724
116-136	348-29	103-40-16	149-42-33	1.959	-1.692	0.988	-38092.495	31283.034	-101.440	171.636480
348-29	348-30	181-24-59	151-07-32	3.777	-3.307	1.824	-38095.802	31284.858	-98.628	326.162796
348-30	348-31	179-30-39	150-38-11	4.982	-4.342	2.443	-38100.144	31287.301	-94.361	409.715462
348-31	348-32	181-44-26	152-22-37	4.909	-4.349	2.275	-38104.493	31289.576	-89.643	389.857407
348-32	348-33	180-24-48	152-47-25	4.905	-4.362	2.243	-38108.855	31291.819	-85.125	371.315250
348-33	348-34	180-37-48	153-25-13	4.760	-4.257	2.130	-38113.112	31293.949	-80.752	343.761264
348-34	348-35	181-09-10	154-34-23	4.897	-4.423	2.103	-38117.535	31296.052	-76.519	338.443537
348-35	348-36	180-37-33	155-11-56	4.886	-4.436	2.050	-38121.971	31298.102	-72.366	321.015576
348-36	348-37	180-45-07	155-57-03	4.888	-4.464	1.992	-38126.435	31300.094	-68.324	304.998336
348-37	348-38	180-40-23	156-37-26	4.882	-4.481	1.937	-38130.916	31302.031	-64.395	288.553995
348-38	348-39	181-02-42	157-40-08	4.877	-4.511	1.853	-38135.427	31303.884	-60.605	273.389155
348-39	348-40	180-35-42	158-15-50	4.886	-4.538	1.809	-38139.965	31305.693	-56.943	258.407334
348-40	348-41	180-53-28	159-09-18	4.880	-4.561	1.736	-38144.526	31307.429	-53.398	243.548278
348-41	348-42	180-58-16	160-07-34	4.879	-4.588	1.659	-38149.114	31309.088	-50.003	229.413764
348-42	348-43	180-42-46	160-50-20	4.892	-4.621	1.606	-38153.735	31310.694	-46.738	215.976298
348-43	348-44	180-28-14	161-18-34	4.891	-4.633	1.567	-38158.368	31312.261	-43.565	201.836645
348-44	348-45	180-50-28	162-09-02	4.898	-4.663	1.501	-38163.031	31313.762	-40.497	188.837511
348-45	348-46	180-41-40	162-50-42	4.882	-4.665	1.440	-38167.696	31315.202	-37.556	175.198740
348-46	348-47	180-40-58	163-31-40	4.888	-4.687	1.386	-38172.383	31316.588	-34.730	162.779510
348-47	348-48	181-09-39	164-41-19	4.887	-4.714	1.291	-38177.097	31317.879	-32.053	151.097842
348-48	348-49	180-56-57	165-38-16	4.890	-4.737	1.213	-38181.834	31319.092	-29.549	139.973613
348-49	348-50	180-34-07	166-12-23	4.893	-4.752	1.167	-38186.586	31320.259	-27.169	129.107088
348-50	348-51	180-39-10	166-51-33	4.891	-4.763	1.112	-38191.349	31321.371	-24.890	118.551070
348-51	348-52	180-39-54	167-31-27	4.667	-4.557	1.008	-38195.906	31322.379	-22.770	103.762890

<< 四街道南土地区画整理事業 >>

器械点	視準点	内角	方向角	距離	緯距	経距	X座標	Y座標	倍横距	倍面積
348-52	348-53	180-30-14	168-01-41	4.899	-4.792	1.016	-38200.698	31323.395	-20.746	99.414832
348-53	SA21-1	174-45-04	162-46-45	9.101	-8.693	2.694	-38209.391	31326.089	-17.036	148.093948
SA21-1	SA21-4	55-25-40	38-12-25	10.000	7.858	6.185	-38201.533	31332.274	-8.157	-64.097706
SA21-4	SA21-3	270-00-00	128-12-25	10.000	-6.185	7.858	-38207.718	31340.132	5.886	-36.404910
SA21-3	SA21-2	270-00-00	218-12-25	10.000	-7.858	-6.185	-38215.576	31333.947	7.559	-59.398622
SA21-2	SA21-1	270-00-00	308-12-25	10.000	6.185	-7.858	-38209.391	31326.089	-6.484	-40.103540
SA21-1	348-53	214-34-20	342-46-45	9.101	8.693	-2.694	-38200.698	31323.395	-17.036	-148.093948
348-53	116-1	6-21-15	169-08-00	52.330	-51.391	9.865	-38252.089	31333.260	-9.865	506.972215
									倍面積	52531.550851
									面積	26265.77

* * 面積計算 (倍横距法) * *

地番	器械点	視準点	内角	方向角	距離	緯距	経距	X座標	Y座標	倍横距	倍面積
116-2	SA21-6	SA21-4	90-00-00	308-12-25	5.867	3.629	-4.610	-38201.533	31332.274	-4.610	-16.729690
	SA21-4	SA21-1	90-00-00	218-12-25	10.000	-7.858	-6.185	-38209.391	31326.089	-15.405	121.052490
	SA21-1	SA21-5	90-00-00	128-12-25	5.867	-3.629	4.610	-38213.020	31330.699	-16.980	61.620420
	SA21-5	SA21-6	90-00-00	38-12-25	10.000	7.858	6.185	-38205.162	31336.884	-6.185	-48.601730
									倍面積	117.341490	
									面積	58.67	

<< 四街道南土地区画整理事業 >>

* * 面積計算 (倍横距法) * *

地番	器械点	視準点	内角	方向角	距離	緯距	経距	X座標	Y座標	倍横距	倍面積
116-3											
SA21-5	SA21-2	SA21-2	90-00-00	128-12-25	4.133	-2.556	3.248	-38215.576	31333.947	3.248	-8.301888
SA21-2	SA21-3	SA21-3	90-00-00	38-12-25	10.000	7.858	6.185	-38207.718	31340.132	12.681	99.647298
SA21-3	SA21-6	SA21-6	90-00-00	308-12-25	4.133	2.556	-3.248	-38205.162	31336.884	15.618	39.919608
SA21-6	SA21-5	SA21-5	90-00-00	218-12-25	10.000	-7.858	-6.185	-38213.020	31330.699	6.185	-48.601730
										倍面積	82.663288
										面積	41.33