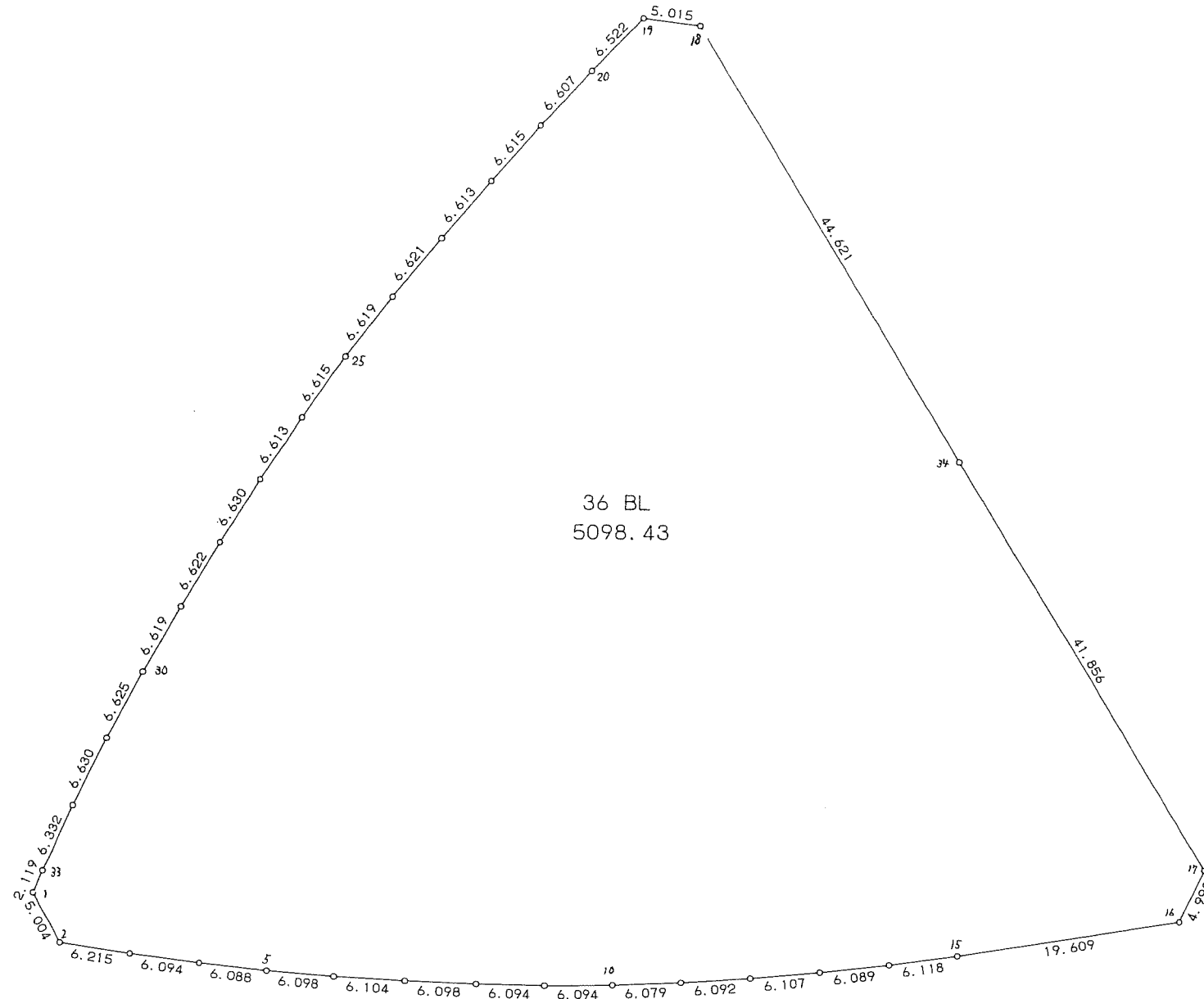
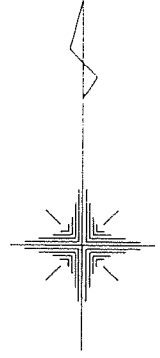


36 街区



<< 四街道南土地地区画整理事業 >>

\* \* 面積計算 (倍横距法) \* \*

地 器械点	番 : 視準点	36 BL 内角	方向角	距離	緯距	経距	X座標	Y座標	倍横距	倍面積
36-1	36-2	126-52-23	150-54-35	5.004	-4.373	2.433	-39281.126	29767.652	2.433	-10.639509
36-2	36-3	127-46-14	98-40-49	6.215	-0.938	6.144	-39282.064	29773.796	11.010	-10.327380
36-3	36-4	178-58-02	97-38-51	6.094	-0.811	6.040	-39282.875	29779.836	23.194	-18.810334
36-4	36-5	178-37-23	96-16-14	6.088	-0.665	6.052	-39283.540	29785.888	35.286	-23.465190
36-5	36-6	178-32-46	94-49-00	6.098	-0.512	6.076	-39284.052	29791.964	47.414	-24.275968
36-6	36-7	178-40-04	93-29-04	6.104	-0.371	6.093	-39284.423	29798.057	59.583	-22.105293
36-7	36-8	178-36-41	92-05-45	6.098	-0.223	6.094	-39284.646	29804.151	71.770	-16.004710
36-8	36-9	178-30-21	90-36-06	6.094	-0.064	6.094	-39284.710	29810.245	83.958	-5.373312
36-9	36-10	178-34-49	89-10-55	6.094	0.087	6.093	-39284.623	29816.338	96.145	8.364615
36-10	36-11	178-40-07	87-51-02	6.079	0.228	6.075	-39284.395	29822.413	108.313	24.695364
36-11	36-12	178-31-00	86-22-02	6.092	0.386	6.080	-39284.009	29828.493	120.468	46.500648
36-12	36-13	178-38-41	85-00-43	6.107	0.531	6.084	-39283.478	29834.577	132.632	70.427592
36-13	36-14	178-34-34	83-35-17	6.089	0.680	6.051	-39282.798	29840.628	144.767	98.441560
36-14	36-15	178-40-50	82-16-07	6.118	0.823	6.062	-39281.975	29846.690	156.880	129.112240
36-15	36-16	178-44-20	81-00-27	19.609	3.065	19.368	-39278.910	29866.058	182.310	558.780150
36-16	36-17	124-16-51	25-17-18	4.998	4.519	2.135	-39274.391	29868.193	203.813	921.030947
36-17	36-34	123-40-39	328-57-57	41.856	35.865	-21.579	-39238.526	29846.614	184.369	6612.394185
36-34	36-18	180-01-49	328-59-46	44.621	38.246	-22.984	-39200.280	29823.630	139.806	5347.020276
36-18	36-19	128-31-53	277-31-39	5.015	0.657	-4.972	-39199.623	29818.658	111.850	73.485450
36-19	36-20	127-18-40	224-50-19	6.522	-4.625	-4.599	-39204.248	29814.059	102.279	-473.040375
36-20	36-21	178-29-36	223-19-55	6.607	-4.806	-4.534	-39209.054	29809.525	93.146	-447.659676
36-21	36-22	178-32-57	221-52-52	6.615	-4.925	-4.416	-39213.979	29805.109	84.196	-414.665300
36-22	36-23	178-18-58	220-11-50	6.613	-5.051	-4.268	-39219.030	29800.841	75.512	-381.411112
36-23	36-24	178-42-31	218-54-21	6.621	-5.152	-4.158	-39224.182	29796.683	67.086	-345.627072
36-24	36-25	178-18-56	217-13-17	6.619	-5.271	-4.004	-39229.453	29792.679	58.924	-310.588404

<< 四街道南土地区画整理事業 >>

器械点	視準点	内角	方向角	距離	緯距	経距	X座標	Y座標	倍横距	倍面積
36-25	36-26	178-29-22	215-42-39	6.615	-5.371	-3.861	-39234.824	29788.818	51.059	-274.237889
36-26	36-27	178-31-03	214-13-42	6.613	-5.468	-3.720	-39240.292	29785.098	43.478	-237.737704
36-27	36-28	178-25-52	212-39-34	6.630	-5.582	-3.578	-39245.874	29781.520	36.180	-201.956760
36-28	36-29	178-26-16	211-05-50	6.622	-5.670	-3.420	-39251.544	29778.100	29.182	-165.461940
36-29	36-30	178-35-50	209-41-40	6.619	-5.750	-3.279	-39257.294	29774.821	22.483	-129.277250
36-30	36-31	178-16-29	207-58-09	6.625	-5.851	-3.107	-39263.145	29771.714	16.097	-94.183547
36-31	36-32	178-28-20	206-26-29	6.630	-5.936	-2.952	-39269.081	29768.762	10.038	-59.585568
36-32	36-33	178-35-53	205-02-22	6.332	-5.737	-2.680	-39274.818	29766.082	4.406	-25.277222
36-33	36-1	178-59-50	204-02-12	2.119	-1.935	-0.863	-39276.753	29765.219	0.863	-1.669905
									倍面積	10196.871607
									面積	5098.43